

CORRECTIVE SERVICES

AUSTRALIA

EMBARGO: 11.30AM (CANBERRA TIME) THURS 17 SEP 2009

C O N T E N T S

	<i>page</i>
Notes	2
Summary of findings	3

T A B L E S

1 Persons in corrective services, summary	9
2 Persons in full-time custody	11
3 Imprisonment rates	12
4 Persons in full-time custody, by sex	13
5 Imprisonment rates, by sex	14
6 Persons in full-time custody, by type of custody	15
7 Imprisonment rates, by type of custody	16
8 Persons in full-time custody, by legal status	17
9 Imprisonment rates, by legal status	18
10 Sentenced prisoner receptions into full-time custody	19
11 Persons in periodic detention, by sex	20
12 Federal sentenced persons in full-time custody, by sex	21
13 Indigenous persons in full-time custody, by sex	22
14 Indigenous imprisonment rates, by sex	23
15 Indigenous persons in full-time custody, by legal status	24
16 Indigenous imprisonment rates, by legal status	25
17 Persons in community-based corrections, by sex	26
18 Community-based corrections rates, by sex	27
19 Persons in community-based corrections, by type of order	28

A D D I T I O N A L I N F O R M A T I O N

Explanatory Notes	30
Appendix Experimental Community-Based Corrections Data	37
Glossary	41

I N Q U I R I E S

For further information about these and related statistics, contact the National Information and Referral Service on 1300 135 070 or Jo Dover on Melbourne (03) 9615 7681.

NOTES

FORTHCOMING ISSUES

ISSUE (Quarter)

RELEASE DATE

September 2009

26 November 2009

.....

ABOUT THIS PUBLICATION

This publication presents information on persons in custody and community-based corrections. The statistics are derived from information provided to the Australian Bureau of Statistics (ABS) from administrative records held by corrective services agencies in each state and territory, and from the Australian Government Attorney-General's Department for details on federal prisoners. Details are provided for each state and territory on: prisoner numbers and imprisonment rates by type of custody (i.e. open or secure custody or periodic detention); prisoner numbers by legal status (sentenced or unsentenced) for all prisoners and for Indigenous prisoners; the number of sentenced receptions into custody; the number of federal prisoners; and the numbers and rates of persons serving community-based corrections orders. Experimental data on the Indigenous status of persons in community-based corrections are also included in the Appendix.

The ABS acknowledges the valuable contribution of the Board of Management and the Advisory Group of the National Corrective Services Statistics Unit as well as the staff of the various agencies that provide the statistics that are presented in this publication.

FURTHER INFORMATION

More information about ABS activities in the field of crime and justice statistics is available from the Crime and Justice theme page on the ABS website <www.abs.gov.au>. Details of other ABS publications relating to Crime and Justice statistics can be found in paragraphs 48-49 of the Explanatory Notes.

.....

ABBREVIATIONS

ABS Australian Bureau of Statistics
 ACT Australian Capital Territory
 Aust. Australia
 ERP estimated resident population
 NCCJS National Centre for Crime and Justice Statistics, Australian Bureau of Statistics
 NSW New South Wales
 NT Northern Territory
 Qld Queensland
 SA South Australia
 Tas. Tasmania
 Vic. Victoria
 WA Western Australia

Ian Ewing
 Acting Australian Statistician

SUMMARY OF FINDINGS

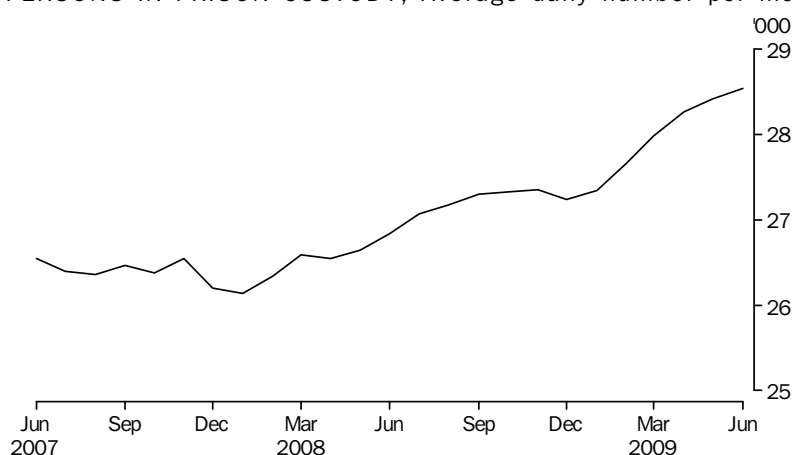
PERSONS IN CORRECTIVE SERVICES

Based on first day of the month averages, for the June quarter 2009, there were 84,700 persons under the authority of corrective services (excluding those in periodic detention). The total comprised 28,334 persons in full-time custody and 56,366 persons in community-based corrections. This represents an increase of 4% (3,198 persons) from the June quarter 2008. Over the same period, persons in full-time custody increased by 6% (1,694 persons) and persons in community-based corrections increased by 3% (1,504 persons).

Number of prisoners

During the June quarter 2009, the average daily number of full-time prisoners in Australia was 28,409 persons. This was an increase of 3% from the March quarter 2009, and of 6% on the June quarter 2008.

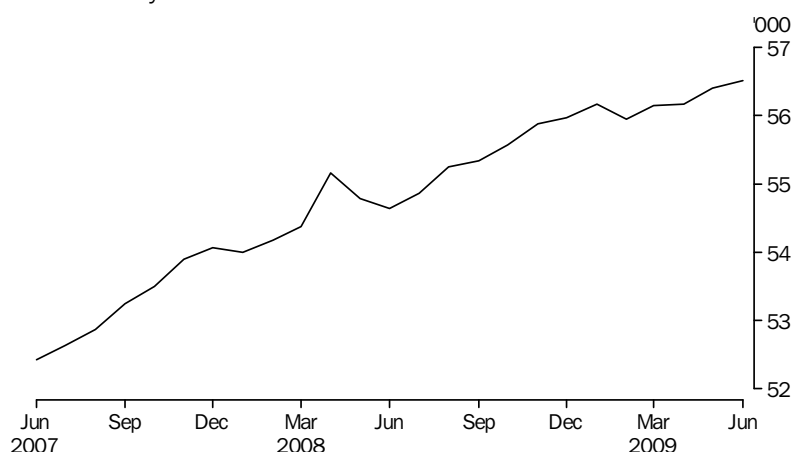
PERSONS IN PRISON CUSTODY, Average daily number per month



Number of persons in community-based corrections

Community-based corrections orders are non-custodial orders served under the authority of adult corrective services agencies and include restricted movement, reparations (fine options and community service) and supervision orders (parole, bail, and sentenced probation). Quarterly averages are based on first day of the month figures. In the June quarter 2009, there were 56,366 persons in community-based corrections in Australia based on first day of the month averages, an increase of less than 1% (277 persons) from the March quarter 2009.

PERSONS IN COMMUNITY-BASED CORRECTIONS, Average number on the first day of the month



SUMMARY OF FINDINGS *continued*

PERSONS IN CUSTODY

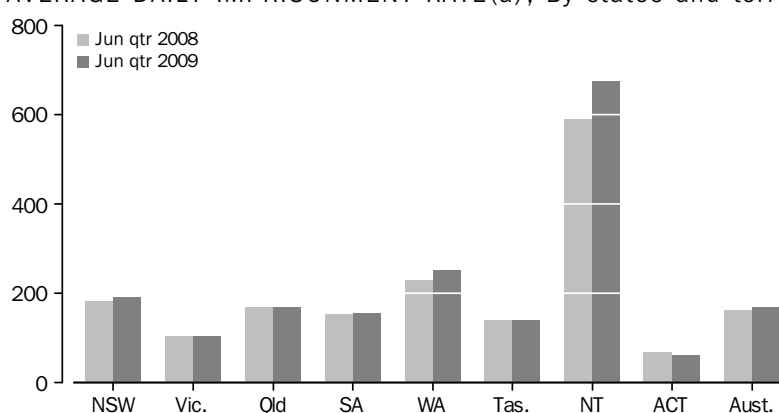
Rates per 100,000 adults

Nationally, the June quarter 2009 average daily imprisonment rate was 171 prisoners per 100,000 adult population, an increase of 4% from the June quarter 2008 (164 prisoners). The Northern Territory had the highest imprisonment rate (677 prisoners per 100,000 adult population), followed by Western Australia (252) and New South Wales (192).

The Australian Capital Territory (including Australian Capital Territory prisoners held in New South Wales prisons) and Victoria had the lowest imprisonment rates (62 and 104 prisoners per 100,000 adult population respectively).

The Northern Territory recorded the largest proportional increase in imprisonment rates from the June quarter 2008 (15%). The largest proportional decrease over the same period was recorded in the Australian Capital Territory (10%).

AVERAGE DAILY IMPRISONMENT RATE(a), By states and territories



(a) Rate per 100,000 adult population.

Sex

Of the average daily number of full-time prisoners in Australia in the June quarter 2009, 26,364 (93%) were male and 2,046 (7%) were female. The average daily imprisonment rate for males was 321 prisoners per 100,000 adult male population, while for females it was 24 prisoners per 100,000 adult female population. Males were 13 times more likely to be in prison than females.

Type of full-time custody

The average daily number of prisoners in secure prison custody in the June quarter 2009 was 21,758 (77% of prisoners in full-time custody). Open prison custody comprised 6,651 prisoners (23%).

Victoria and Tasmania had the highest proportion of prisoners in secure custody (both 90%) of those in full-time custody, followed by Queensland and South Australia (both 89%). The Australian Capital Territory (including Australian Capital Territory prisoners held in New South Wales prisons) had the lowest proportion of prisoners in secure full-time custody (45%).

Legal status

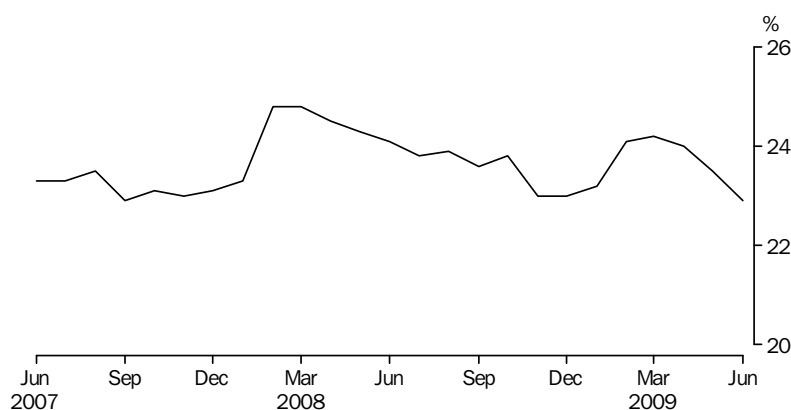
The average number of prisoners in full-time custody on the first day of each month in the June quarter 2009 was 28,334, comprising an average of 21,685 (77%) sentenced and 6,649 (23%) unsentenced prisoners. Sentenced prisoners increased by 4% from the previous quarter and by 8% from the June quarter 2008.

SUMMARY OF FINDINGS *continued*

Legal status continued

Unsentenced prisoners increased by 2% from the previous quarter and increased by 3% from the June quarter 2008. The Australian Capital Territory (including Australian Capital Territory prisoners held in New South Wales prisons) and South Australia had the highest proportions of unsentenced prisoners (42% and 34% respectively). The lowest proportions of unsentenced prisoners were recorded in Western Australia (18%), Queensland and Victoria (both 20%).

PROPORTION OF UNSENTENCED PERSONS IN PRISON CUSTODY (a), Per month



(a) Based on average number on the first day of the month

Sentenced Prisoner Receptions

There were 7,705 sentenced prisoner receptions into full-time custody in Australia in the June quarter 2009. This number increased by 450 (6%) from the March quarter 2009, and increased by 266 (4%) from the June quarter 2008.

Periodic detention

Periodic detention is a form of custody or order where a sentenced prisoner is required to be held in custody on a part-time basis. This type of custody order is only used in New South Wales and the Australian Capital Territory. During the June quarter 2009 there was an average daily number of 799 persons in New South Wales and 45 persons in the Australian Capital Territory held in periodic detention. The rate of imprisonment for periodic detainees increased by 10% in New South Wales, and decreased by 12% in the Australian Capital Territory from the March quarter 2009.

Federal prisoners

In the June quarter 2009, there were 705 federal sentenced prisoners in Australia based on first day of the month figures, an increase of 3% from the June quarter 2008. More than half (410) of the federal prisoners were sentenced in New South Wales.

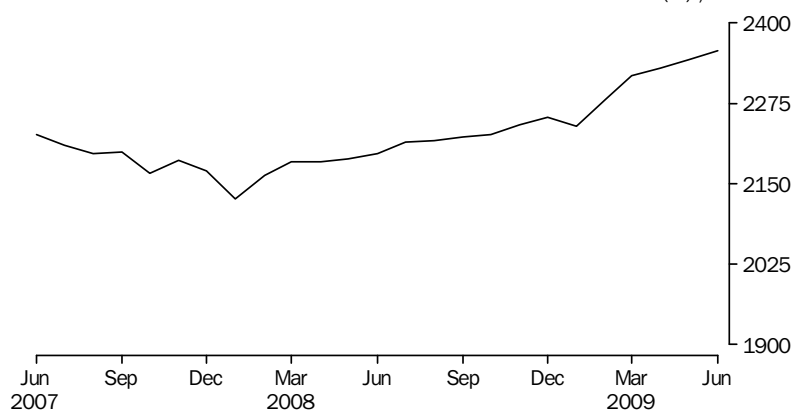
SUMMARY OF FINDINGS *continued*

Indigenous prisoners

The average daily number of full-time Indigenous adult prisoners in Australia in the June quarter 2009 was 7,261, comprising 6,652 (92%) males and 608 (8%) females. Indigenous prisoners represented 26% of the total full-time prisoner population in the June quarter 2009. The total Indigenous population aged 18 years and over at 30 June 2009 was 2% of the Australian population.

Over 75% of the total Indigenous prisoner population was located in New South Wales (2,296), Western Australia (1,725) and Queensland (1,581).

AVERAGE DAILY INDIGENOUS IMPRISONMENT RATE(a), Per month

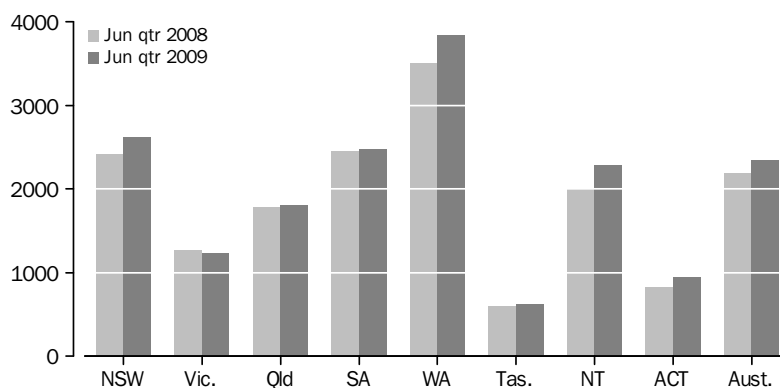


(a) Rate per 100,000 adult Indigenous population.

The national average daily Indigenous imprisonment rate in the June quarter 2009 was 2,343 per 100,000 adult Indigenous population, an increase of 3% from the previous quarter, and a 7% increase from the June quarter 2008.

The highest Indigenous imprisonment rate was recorded in Western Australia (3,846 Indigenous prisoners per 100,000 adult Indigenous population), followed by New South Wales (2,617) and South Australia (2,472). The lowest Indigenous imprisonment rate was recorded in Tasmania (619), followed by the Australian Capital Territory (945).

AVERAGE DAILY INDIGENOUS IMPRISONMENT RATE(a), By states and territories



(a) Rate per 100,000 adult Indigenous population.

SUMMARY OF FINDINGS *continued*

Indigenous prisoners continued

The largest proportional increase in the Indigenous imprisonment rate from the June quarter 2008 was recorded in the Northern Territory, and the Australian Capital Territory (both 15%) (including Australian Capital Territory prisoners in New South Wales prisons). Victoria was the only state to record a proportional decrease (3%) over the same period.

Different age profiles of the Indigenous and non-Indigenous population can affect the imprisonment rate numbers. The quarterly collection is unable to take age into account; however, data from the Prisoner Census collection can provide this level of detail.

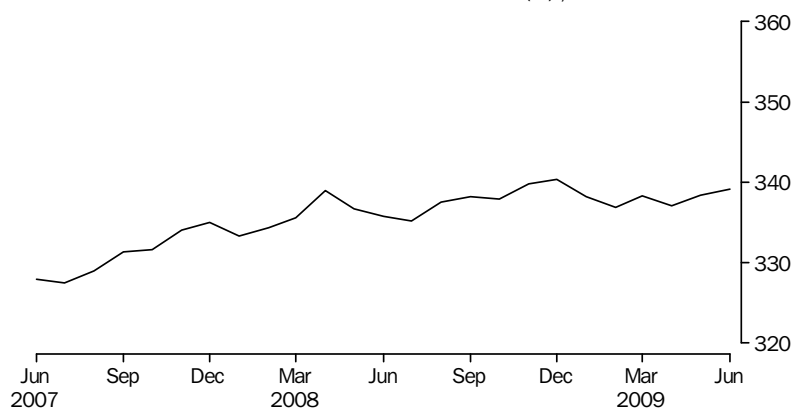
The national age standardised Indigenous imprisonment rate from the annual Prisoner Census conducted at June 2008 was over 13 times higher (1,769 per 100,000 adult Indigenous population) than the rate for non-Indigenous persons (133 per 100,000 adult non-Indigenous population). Further information on the comparison of imprisonment rates between Indigenous and non-Indigenous populations can be found in *Prisoners in Australia, 2008* (cat.no.4517.0).

PERSONS IN COMMUNITY-BASED CORRECTIONS

Rates per 100,000 adults

Nationally, the rate of persons in community-based corrections was 338 persons per 100,000 adult population for the June quarter 2009 based on first day of the month figures. This was an increase of less than 1% from the June quarter 2008 (337 persons per 100,000 adults). The largest increase from the June quarter 2008 was recorded in Tasmania (7%). The largest decrease was recorded in the Northern Territory (5%).

COMMUNITY-BASED CORRECTIONS RATE(a), Per month

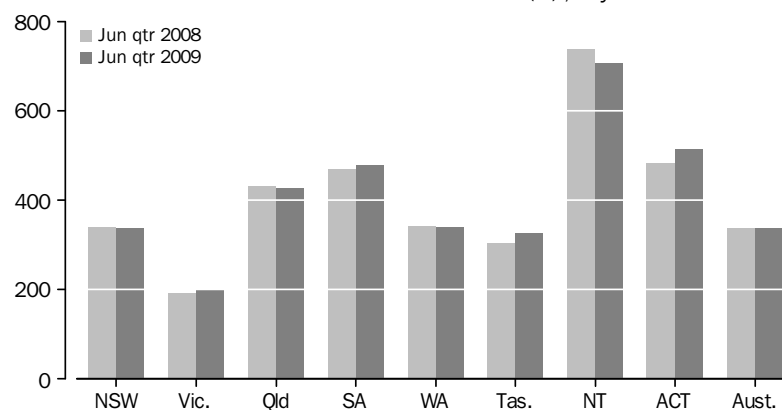


(a) Rate per 100,000 adult population, based on average number on the first day of the month

SUMMARY OF FINDINGS *continued*

*Rates per 100,000 adults
continued*

COMMUNITY-BASED CORRECTIONS RATE(a), By states and territories



(a) Rate per 100,000 adult population, based on average number on the first day of the month

Sex

Of the average number of persons in community-based corrections in Australia in the June quarter 2009, 46,100 (82%) were male and 10,178 (18%) were female.

In the June quarter 2009, the rate of community-based corrections for males was 561 per 100,000 adult male population compared to 120 females per 100,000 adult female population. Males were almost five times more likely to be in community-based corrections than females.

Type of orders

In the June quarter 2009, there were 12,363 persons on parole following a period of imprisonment, a decrease of 3% from the March quarter 2009. Three states accounted for 79% of persons serving parole orders: New South Wales (4,201 persons), Queensland (4,048) and Victoria (1,470). The largest proportional decrease in parole orders from the March quarter 2009 was recorded in Western Australia (5%), while the largest proportional increase was recorded in Tasmania (7%).

For this same period, there were 34,310 persons under sentenced probation and 10,347 persons serving community service orders.

PERSONS IN CORRECTIVE SERVICES, Summary(a)

	NSW(b)	Vic.	Qld	SA	WA	Tas.	NT	ACT in ACT(c)	ACT in NSW(b)	ACT Total(d)	Aust. (b)
AVERAGE DAILY NUMBER											
Males in full-time custody											
Jun Qtr 08	9 025	3 946	5 138	1 778	3 471	488	877	80	85	165	24 803
Mar Qtr 09	9 372	3 964	5 191	1 797	3 700	480	1 059	110	48	158	25 672
Jun Qtr 09	9 634	4 053	5 298	1 818	3 909	495	1 026	132	19	150	26 364
Females in full-time custody											
Jun Qtr 08	752	239	409	124	262	40	41	8	8	16	1 875
Mar Qtr 09	759	259	424	131	310	31	46	11	3	14	1 971
Jun Qtr 09	781	272	434	130	325	37	52	15	1	17	2 046
Persons in full-time custody											
Jun Qtr 08	9 777	4 185	5 547	1 902	3 733	527	919	88	94	181	26 677
Mar Qtr 09	10 131	4 223	5 615	1 928	4 010	511	1 105	121	52	173	27 643
Jun Qtr 09	10 415	4 325	5 732	1 948	4 234	532	1 078	147	20	167	28 409
Indigenous persons in full-time custody											
Jun Qtr 08	2 070	242	1 511	418	1 530	65	756	13	8	22	6 605
Mar Qtr 09	2 191	250	1 499	448	1 678	67	911	20	7	27	7 064
Jun Qtr 09	2 296	243	1 581	436	1 725	69	887	23	2	26	7 261
AVERAGE NUMBER ON FIRST DAY OF MONTH											
Unsentenced persons in full-time custody											
Jun Qtr 08	2 571	855	1 255	645	756	117	198	86	—	86	6 482
Mar Qtr 09	2 727	813	1 162	654	688	107	279	112	—	112	6 543
Jun Qtr 09	2 714	877	1 170	677	746	123	271	71	—	71	6 649
Sentenced persons in full-time custody											
Jun Qtr 08	7 188	3 321	4 290	1 265	2 965	418	710	—	92	92	20 158
Mar Qtr 09	7 366	3 401	4 381	1 271	3 292	401	818	—	47	47	20 929
Jun Qtr 09	7 671	3 435	4 560	1 298	3 431	403	814	73	26	98	21 685
Persons in full-time custody											
Jun Qtr 08	9 759	4 176	5 545	1 910	3 721	535	907	86	92	178	26 640
Mar Qtr 09	10 092	4 214	5 543	1 925	3 980	508	1 097	112	47	160	27 472
Jun Qtr 09	10 385	4 312	5 730	1 976	4 177	526	1 085	144	26	169	28 334
Males in community-based corrections(e)											
Jun Qtr 08	15 174	6 297	11 164	4 696	4 309	915	1 012	1 081	..	1 081	44 648
Mar Qtr 09	15 452	6 539	r11 487	4 961	4 405	951	955	1 162	..	1 162	r45 913
Jun Qtr 09	15 387	6 735	11 413	4 956	4 475	996	973	1 164	..	1 164	46 100
Females in community-based corrections(e)											
Jun Qtr 08	2 852	1 468	2 845	1 144	1 249	235	140	196	..	196	10 128
Mar Qtr 09	2 755	1 466	r2 924	1 129	1 203	243	145	228	..	228	r10 092
Jun Qtr 09	2 802	1 509	2 925	1 093	1 222	251	153	224	..	224	10 178
Persons in community-based corrections(e)(f)											
Jun Qtr 08	18 089	7 787	14 009	5 840	5 558	1 150	1 152	1 277	..	1 277	54 862
Mar Qtr 09	18 280	8 012	r14 411	6 093	5 608	1 195	1 100	1 390	..	1 390	r56 089
Jun Qtr 09	18 269	8 249	14 339	6 050	5 699	1 247	1 126	1 388	..	1 388	56 366

.. not applicable

— nil or rounded to zero (including null cells)

r revised

(a) For the calculation of quarterly figures – see Explanatory Notes, paragraph 5.

(b) Custodial data includes ACT prisoners held in NSW prisons. The ACT in NSW figures are a subset of the NSW figures and are not separately counted in the Australian totals – see Explanatory Notes, paragraph 43.

(c) Refers to unsentenced persons in ACT prison custody and may include some sentenced prisoners – see Explanatory Notes, paragraph 43.

(d) ACT in ACT figures and ACT in NSW figures may not add to ACT total due to rounding.

(e) Figures include persons with breached or suspended orders, with the exception of Vic. and Tas.

(f) Includes persons whose sex is unknown.

PERSONS IN CORRECTIVE SERVICES, Summary(a) *continued*

	NSW(b)	Vic.	Qld	SA	WA	Tas.	NT	ACT in ACT(c)	ACT in NSW(b)	ACT Total(d)	Aust. (b)
PERCENTAGE CHANGE (AVERAGE DAILY NUMBER)											
Males in full-time custody											
Jun Qtr 08 to Jun Qtr 09	6.7	2.7	3.1	2.2	12.6	1.4	17.0	65.0	-77.6	-9.1	6.3
Mar Qtr 09 to Jun Qtr 09	2.8	2.2	2.1	1.2	5.6	3.1	-3.1	20.0	-60.4	-5.1	2.7
Females in full-time custody											
Jun Qtr 08 to Jun Qtr 09	3.9	13.8	6.1	4.8	24.0	-7.5	26.8	87.5	-87.5	6.3	9.1
Mar Qtr 09 to Jun Qtr 09	2.9	5.0	2.4	-0.8	4.8	19.4	13.0	36.4	-66.7	21.4	3.8
Persons in full-time custody											
Jun Qtr 08 to Jun Qtr 09	6.5	3.3	3.3	2.4	13.4	0.9	17.3	67.0	-78.7	-7.7	6.5
Mar Qtr 09 to Jun Qtr 09	2.8	2.4	2.1	1.0	5.6	4.1	-2.4	21.5	-61.5	-3.5	2.8
Indigenous persons in full-time custody											
Jun Qtr 08 to Jun Qtr 09	10.9	0.4	4.6	4.3	12.7	6.2	17.3	76.9	-75.0	18.2	9.9
Mar Qtr 09 to Jun Qtr 09	4.8	-2.8	5.5	-2.7	2.8	3.0	-2.6	15.0	-71.4	-3.7	2.8
PERCENTAGE CHANGE (AVERAGE NUMBER ON FIRST DAY OF MONTH)											
Unsentenced persons in full-time custody											
Jun Qtr 08 to Jun Qtr 09	5.6	2.6	-6.8	5.0	-1.3	5.1	36.9	-17.4	na	-17.4	2.6
Mar Qtr 09 to Jun Qtr 09	-0.5	7.9	0.7	3.5	8.4	15.0	-2.9	-36.6	na	-36.6	1.6
Sentenced persons in full-time custody											
Jun Qtr 08 to Jun Qtr 09	6.7	3.4	6.3	2.6	15.7	-3.6	14.6	na	-71.7	6.5	7.6
Mar Qtr 09 to Jun Qtr 09	4.1	1.0	4.1	2.1	4.2	0.5	-0.5	na	-44.7	108.5	3.6
Persons in full-time custody											
Jun Qtr 08 to Jun Qtr 09	6.4	3.3	3.3	3.5	12.3	-1.7	19.6	67.4	-71.7	-5.1	6.4
Mar Qtr 09 to Jun Qtr 09	2.9	2.3	3.4	2.6	4.9	3.5	-1.1	28.6	-44.7	5.6	3.1
Males in community-based corrections(e)											
Jun Qtr 08 to Jun Qtr 09	1.4	7.0	2.2	5.5	3.9	8.9	-3.9	7.7	. .	7.7	3.3
Mar Qtr 09 to Jun Qtr 09	-0.4	3.0	-0.6	-0.1	1.6	4.7	1.9	0.2	. .	0.2	0.4
Females in community-based corrections(e)											
Jun Qtr 08 to Jun Qtr 09	-1.8	2.8	2.8	-4.5	-2.2	6.8	9.3	14.3	. .	14.3	0.5
Mar Qtr 09 to Jun Qtr 09	1.7	2.9	—	-3.2	1.6	3.3	5.5	-1.8	. .	-1.8	0.9
Persons in community-based corrections(e)(f)											
Jun Qtr 08 to Jun Qtr 09	1.0	5.9	2.4	3.6	2.5	8.4	-2.3	8.7	. .	8.7	2.7
Mar Qtr 09 to Jun Qtr 09	-0.1	3.0	-0.5	-0.7	1.6	4.4	2.4	-0.1	. .	-0.1	0.5

. . not applicable

— nil or rounded to zero (including null cells)

na not available

(a) For the calculation of quarterly figures – see Explanatory Notes, paragraph 5.

(b) Custodial data includes ACT prisoners held in NSW prisons. The ACT in NSW figures are a subset of the NSW figures and are not separately counted in the Australian totals – see Explanatory Notes, paragraph 43.

(c) Refers to unsentenced persons in ACT prison custody and may include some sentenced prisoners – see Explanatory Notes, paragraph 43.

(d) ACT in ACT figures and ACT in NSW figures may not add to ACT total due to rounding.

(e) Figures include persons with breached or suspended orders, with the exception of Vic. and Tas.

(f) Includes persons whose sex is unknown.

PERSONS IN FULL-TIME CUSTODY

	NSW(a)	Vic.	Qld(b)	SA	WA	Tas.	NT	ACT in ACT(c)	ACT in NSW(a)	ACT Total(d)	Aust. (a) (b)
AVERAGE DAILY NUMBER											
2006	9 281	3 825	5 569	1 590	3 517	518	803	66	115	181	25 169
2007	9 576	4 144	5 571	1 776	3 774	537	856	71	101	172	26 305
2008	9 804	4 240	5 549	1 908	3 824	526	939	95	84	179	26 885
2008											
Jun Qtr	9 777	4 185	5 547	1 902	3 733	527	919	88	94	181	26 677
Sep Qtr	9 910	4 308	5 599	1 936	3 862	522	947	97	73	170	27 180
Dec Qtr	9 909	4 340	5 580	1 911	3 945	525	993	106	68	174	27 308
2009											
Mar Qtr	10 131	4 223	5 615	1 928	4 010	511	1 105	121	52	173	27 643
Jun Qtr	10 415	4 325	5 732	1 948	4 234	532	1 078	147	20	167	28 409
2008											
Apr	9 692	4 175	5 547	1 891	3 723	532	905	85	99	185	26 550
May	9 770	4 188	5 532	1 895	3 726	528	920	86	93	179	26 645
Jun	9 869	4 192	5 564	1 919	3 749	523	931	92	89	181	26 838
Jul	9 916	4 272	5 569	1 944	3 816	517	934	98	82	180	27 067
Aug	9 919	4 319	5 588	1 942	3 852	516	948	95	72	167	27 179
Sep	9 895	4 333	5 643	1 920	3 918	534	960	97	66	163	27 299
Oct	9 907	4 360	5 613	1 913	3 936	543	950	106	65	171	27 328
Nov	9 925	4 366	5 578	1 916	3 954	521	985	112	70	182	27 357
Dec	9 896	4 295	5 548	1 903	3 946	512	1 042	99	70	169	27 242
2009											
Jan	10 004	4 190	5 546	1 907	3 938	501	1 093	110	62	172	27 289
Feb	10 153	4 210	5 617	1 920	4 017	511	1 107	126	50	177	27 661
Mar	10 239	4 268	5 681	1 956	4 075	521	1 116	126	44	169	27 982
Apr	10 382	4 297	5 737	1 959	4 125	526	1 109	132	37	169	28 267
May	10 438	4 334	5 751	1 938	4 210	533	1 062	148	22	170	28 414
Jun	10 425	4 343	5 707	1 946	4 367	535	1 063	161	1	162	28 547

- (a) Includes ACT prisoners held in NSW prisons. The ACT in NSW figures are a subset of the NSW figures and are not separately counted in the Australian totals – see Explanatory Notes, paragraph 43.
- (b) Data prior to the September quarter 2007 may be slightly overstated – see Explanatory Notes, paragraph 35.

- (c) Refers to unsentenced persons in ACT prison custody and may include some sentenced prisoners – see Explanatory Notes, paragraph 43.
- (d) ACT in ACT figures and ACT in NSW figures may not add to ACT total due to rounding.

IMPRISONMENT RATES(a)

	NSW(b)	Vic.	Qld(c)	SA	WA	Tas.	NT	ACT(d)	Aust. (c)
RATE PER 100,000 ADULT POPULATION									
2006	175.6	98.0	180.1	132.0	227.5	139.7	552.3	72.0	160.0
2007	180.1	104.0	175.0	144.9	238.2	143.4	566.5	66.3	164.2
2008	182.6	104.4	169.9	153.5	234.9	138.9	601.6	67.5	164.7
2008									
Jun Qtr	182.3	103.4	170.5	153.3	230.3	139.4	590.4	68.7	163.9
Sep Qtr	184.4	105.8	170.9	155.4	236.2	137.6	606.0	64.0	166.1
Dec Qtr	183.8	106.1	169.2	153.0	239.6	138.1	629.2	65.2	166.1
2009									
Mar Qtr	186.9	102.3	168.6	153.8	240.6	134.3	696.8	64.2	166.7
Jun Qtr	191.9	104.2	171.1	154.8	252.1	139.2	676.7	61.9	170.5
2008									
Apr	180.6	103.1	170.5	152.5	229.7	140.6	581.6	70.0	163.2
May	182.2	103.5	170.0	152.8	229.9	139.5	591.2	67.7	163.7
Jun	184.1	103.6	171.0	154.7	231.3	138.2	598.4	68.5	164.9
Jul	184.3	104.9	170.0	156.1	233.4	136.2	597.5	67.7	165.4
Aug	184.6	106.1	170.5	155.9	235.6	135.9	606.7	63.0	166.1
Sep	184.2	106.4	172.2	154.1	239.6	140.7	614.1	61.4	166.8
Oct	183.8	106.5	170.2	153.1	239.1	142.7	602.4	64.1	166.2
Nov	184.1	106.7	169.2	153.4	240.2	137.0	624.2	68.2	166.4
Dec	183.5	105.0	168.3	152.3	239.6	134.6	660.8	63.4	165.7
2009									
Jan	184.3	101.5	166.6	152.1	236.3	131.6	689.2	64.0	164.6
Feb	187.3	102.0	168.7	153.1	241.0	134.3	697.5	65.8	166.8
Mar	189.0	103.4	170.6	156.0	244.5	136.9	703.7	63.1	168.8
Apr	190.9	103.6	171.2	155.8	245.6	137.7	696.4	62.6	169.6
May	192.2	104.4	171.6	154.1	250.7	139.6	666.8	63.0	170.5
Jun	192.4	104.7	170.3	154.7	260.0	140.2	667.3	59.9	171.3

- (a) Imprisonment rates are based on different sources – see Explanatory Notes, paragraphs 17–21.
 (b) Excludes ACT prisoners held in NSW prisons.
 (c) Data prior to the September quarter 2007 may be slightly overstated – see Explanatory Notes, paragraph 35.
 (d) Includes ACT prisoners held in ACT as well as ACT prisoners held in NSW – see Explanatory Notes, paragraph 47.

PERSONS IN FULL-TIME CUSTODY, By sex

	NSW(a)	Vic.	Qld(b)	SA	WA	Tas.	NT	ACT in ACT(c)	ACT in NSW(a)	ACT Total(d)	Aust. (a) (b)
MALES (AVERAGE DAILY NUMBER)											
2006	8 601	3 588	5 168	1 488	3 257	478	771	60	108	169	23 412
2007	8 867	3 894	5 151	1 658	3 459	502	817	65	96	162	24 415
2008	9 078	3 997	5 122	1 782	3 538	489	895	86	77	163	24 986
2008											
Jun Qtr	9 025	3 946	5 138	1 778	3 471	488	877	80	85	165	24 803
Sep Qtr	9 201	4 057	5 155	1 809	3 575	482	899	88	68	157	25 267
Dec Qtr	9 163	4 093	5 137	1 790	3 640	490	945	97	64	161	25 355
2009											
Mar Qtr	9 372	3 964	5 191	1 797	3 700	480	1 059	110	48	158	25 672
Jun Qtr	9 634	4 053	5 298	1 818	3 909	495	1 026	132	19	150	26 364
Apr	9 614	4 031	5 305	1 828	3 810	493	1 054	117	35	152	26 251
May	9 653	4 062	5 313	1 807	3 886	497	1 011	133	20	153	26 362
Jun	9 635	4 064	5 276	1 819	4 031	494	1 014	145	1	146	26 478
FEMALES (AVERAGE DAILY NUMBER)											
2006	679	237	401	102	260	40	32	6	7	12	1 757
2007	709	249	419	118	315	35	39	6	5	11	1 890
2008	726	243	427	126	286	37	44	9	6	15	1 899
2008											
Jun Qtr	752	239	409	124	262	40	41	8	8	16	1 875
Sep Qtr	709	251	444	126	287	40	48	8	5	13	1 913
Dec Qtr	746	247	443	120	305	35	47	8	5	13	1 953
2009											
Mar Qtr	759	259	424	131	310	31	46	11	3	14	1 971
Jun Qtr	781	272	434	130	325	37	52	15	1	17	2 046
Apr	768	266	432	131	315	33	55	15	2	17	2 016
May	785	271	438	131	324	37	51	15	2	17	2 053
Jun	790	278	431	127	336	41	49	16	—	16	2 069
PERSONS (AVERAGE DAILY NUMBER)											
2006	9 281	3 825	5 569	1 590	3 517	518	803	66	115	181	25 169
2007	9 576	4 144	5 571	1 776	3 774	537	856	71	101	172	26 305
2008	9 804	4 240	5 549	1 908	3 824	526	939	95	84	179	26 885
2008											
Jun Qtr	9 777	4 185	5 547	1 902	3 733	527	919	88	94	181	26 677
Sep Qtr	9 910	4 308	5 599	1 936	3 862	522	947	97	73	170	27 180
Dec Qtr	9 909	4 340	5 580	1 911	3 945	525	993	106	68	174	27 308
2009											
Mar Qtr	10 131	4 223	5 615	1 928	4 010	511	1 105	121	52	173	27 643
Jun Qtr	10 415	4 325	5 732	1 948	4 234	532	1 078	147	20	167	28 409
Apr	10 382	4 297	5 737	1 959	4 125	526	1 109	132	37	169	28 267
May	10 438	4 334	5 751	1 938	4 210	533	1 062	148	22	170	28 414
Jun	10 425	4 343	5 707	1 946	4 367	535	1 063	161	1	162	28 547

— nil or rounded to zero (including null cells)

(a) Includes ACT prisoners held in NSW prisons. The ACT in NSW figures are a subset of the NSW figures and are not separately counted in the Australian totals – see Explanatory Notes, paragraph 43.

(b) Data prior to the September quarter 2007 may be slightly overstated – see Explanatory Notes, paragraph 35.

(c) Refers to unsentenced persons in ACT prison custody and may include some sentenced prisoners – see Explanatory Notes, paragraph 43.

(d) ACT in ACT figures and ACT in NSW figures may not add to ACT total due to rounding.

IMPRISONMENT RATES(a), By sex

	NSW(b)	Vic.	Qld(c)	SA	WA	Tas.	NT	ACT(d)	Aust. (c)
MALES (RATE PER 100,000 ADULT POPULATION)									
2006	330.4	188.3	336.7	251.7	422.8	264.9	996.7	136.5	301.9
2007	339.7	199.7	326.5	276.4	435.7	275.6	1 031.6	126.7	309.4
2008	345.0	201.0	316.6	293.2	432.4	265.3	1 097.6	125.5	310.9
2008									
Jun Qtr	343.5	199.2	318.8	293.3	426.4	265.0	1 080.3	127.2	309.6
Sep Qtr	349.3	203.5	317.6	297.1	435.0	261.1	1 101.4	120.1	313.5
Dec Qtr	346.8	204.3	314.3	293.0	439.5	264.6	1 146.4	122.4	313.0
2009									
Mar Qtr	352.6	195.9	314.5	293.3	440.6	259.0	1 284.6	119.6	314.2
Jun Qtr	362.0	199.2	318.9	295.6	461.7	265.9	1 240.1	113.1	320.9
Apr	360.6	198.1	319.3	297.3	450.1	264.8	1 273.5	114.3	319.5
May	362.6	199.7	319.8	293.9	459.0	267.1	1 222.1	115.1	320.9
Jun	362.7	199.8	317.6	295.8	476.2	265.8	1 225.3	109.9	322.3
FEMALES (RATE PER 100,000 ADULT POPULATION)									
2006	25.4	11.8	25.8	16.7	33.6	20.8	46.9	9.7	22.0
2007	26.3	12.3	26.1	18.9	39.8	18.2	53.6	8.0	23.2
2008	26.5	11.7	25.9	19.8	35.3	19.1	59.5	11.4	22.9
2008									
Jun Qtr	27.4	11.6	24.9	19.5	32.5	20.4	55.4	12.2	22.7
Sep Qtr	25.9	12.1	26.9	19.8	35.3	20.3	64.7	9.7	23.0
Dec Qtr	27.2	11.8	26.6	18.9	37.3	18.1	62.7	9.7	23.4
2009									
Mar Qtr	27.5	12.3	25.2	20.4	37.5	15.9	60.9	10.6	23.4
Jun Qtr	28.3	12.9	25.7	20.2	39.1	18.9	67.3	12.2	24.2
Apr	27.8	12.6	25.6	20.4	37.9	17.0	72.2	12.5	23.9
May	28.4	12.8	25.9	20.4	39.0	18.7	66.1	12.5	24.3
Jun	28.6	13.2	25.5	19.8	40.4	21.0	63.7	11.5	24.5
PERSONS (RATE PER 100,000 ADULT POPULATION)									
2006	175.6	98.0	180.1	132.0	227.5	139.7	552.3	72.0	160.0
2007	180.1	104.0	175.0	144.9	238.2	143.4	566.5	66.3	164.2
2008	182.6	104.4	169.9	153.5	234.9	138.9	601.6	67.5	164.7
2008									
Jun Qtr	182.3	103.4	170.5	153.3	230.3	139.4	590.4	68.7	163.9
Sep Qtr	184.4	105.8	170.9	155.4	236.2	137.6	606.0	64.0	166.1
Dec Qtr	183.8	106.1	169.2	153.0	239.6	138.1	629.2	65.2	166.1
2009									
Mar Qtr	186.9	102.3	168.6	153.8	240.6	134.3	696.8	64.2	166.7
Jun Qtr	191.9	104.2	171.1	154.8	252.1	139.2	676.7	61.9	170.5
Apr	190.9	103.6	171.2	155.8	245.6	137.7	696.4	62.6	169.6
May	192.2	104.4	171.6	154.1	250.7	139.6	666.8	63.0	170.5
Jun	192.4	104.7	170.3	154.7	260.0	140.2	667.3	59.9	171.3

(a) Imprisonment rates are based on different sources – see Explanatory Notes, paragraphs 17–21.

(b) Excludes ACT prisoners held in NSW prisons.

(c) Data prior to the September quarter 2007 may be slightly overstated – see Explanatory Notes, paragraph 35.

(d) Includes ACT prisoners held in ACT as well as ACT prisoners held in NSW – see Explanatory Notes, paragraph 47.

PERSONS IN FULL-TIME CUSTODY, By type of custody

	NSW(a) (b)	Vic.	Q/d (c)	SA	WA (d)	Tas.	NT	ACT in ACT (e) (f)	ACT in NSW (a)	ACT Total (g)	Aust. (h)
PERSONS IN SECURE CUSTODY (AVERAGE DAILY NUMBER)											
2006	5 736	3 443	4 766	1 413	2 608	444	616	66	33	99	19 093
2007	5 893	3 743	4 853	1 581	2 771	477	621	71	26	97	20 010
2008	6 229	3 797	4 952	1 703	2 794	468	663	95	25	120	20 701
2008											
Jun Qtr	6 237	3 753	4 936	1 704	2 764	470	649	88	29	116	20 600
Sep Qtr	6 295	3 854	4 974	1 737	2 862	467	662	97	24	121	20 949
Dec Qtr	6 436	3 886	5 000	1 686	2 814	468	699	106	20	126	21 095
2009											
Mar Qtr	6 630	3 802	5 083	1 713	2 845	454	776	121	14	135	21 424
Jun Qtr	6 767	3 876	5 118	1 730	2 972	479	747	69	5	75	21 758
Apr	6 768	3 857	5 166	1 738	2 924	470	777	67	10	76	21 767
May	6 771	3 879	5 159	1 721	2 959	482	739	75	6	81	21 785
Jun	6 762	3 891	5 028	1 730	3 033	484	727	67	—	67	21 721
PERSONS IN OPEN CUSTODY (AVERAGE DAILY NUMBER)											
2006	3 545	381	803	177	909	74	187	..	82	82	6 076
2007	3 683	401	717	195	1 003	61	235	..	75	75	6 295
2008	3 575	443	597	205	1 030	58	276	..	59	59	6 184
2008											
Jun Qtr	3 540	432	612	198	969	57	270	..	65	65	6 078
Sep Qtr	3 615	454	625	199	999	55	285	..	49	49	6 232
Dec Qtr	3 473	454	580	224	1 131	57	293	..	48	48	6 213
2009											
Mar Qtr	3 501	421	532	215	1 164	57	329	..	38	38	6 220
Jun Qtr	3 648	449	614	218	1 262	53	330	78	14	92	6 651
Apr	3 614	440	571	221	1 201	56	333	65	27	93	6 500
May	3 667	454	592	217	1 251	51	323	73	16	89	6 629
Jun	3 663	452	679	216	1 334	51	336	94	1	95	6 826
PERSONS IN CUSTODY (AVERAGE DAILY NUMBER)											
2006	9 281	3 825	5 569	1 590	3 517	518	803	66	115	181	25 169
2007	9 576	4 144	5 571	1 776	3 774	537	856	71	101	172	26 305
2008	9 804	4 240	5 549	1 908	3 824	526	939	95	84	179	26 885
2008											
Jun Qtr	9 777	4 185	5 547	1 902	3 733	527	919	88	94	181	26 677
Sep Qtr	9 910	4 308	5 599	1 936	3 862	522	947	97	73	170	27 180
Dec Qtr	9 909	4 340	5 580	1 911	3 945	525	993	106	68	174	27 308
2009											
Mar Qtr	10 131	4 223	5 615	1 928	4 010	511	1 105	121	52	173	27 643
Jun Qtr	10 415	4 325	5 732	1 948	4 234	532	1 078	147	20	167	28 409
Apr	10 382	4 297	5 737	1 959	4 125	526	1 109	132	37	169	28 267
May	10 438	4 334	5 751	1 938	4 210	533	1 062	148	22	170	28 414
Jun	10 425	4 343	5 707	1 946	4 367	535	1 063	161	1	162	28 547

.. not applicable

— nil or rounded to zero (including null cells)

(a) Includes ACT prisoners held in NSW prisons. The ACT in NSW figures are a subset of the NSW figures and are not separately counted in the Australian totals – see Explanatory Notes, paragraph 43.

(b) The classification of some NSW correctional facilities changed from March 2008 – see Explanatory Notes, paragraph 31.

(c) Data prior to the September quarter 2007 may be slightly overstated – see Explanatory Notes, paragraph 35.

(d) The definition of persons in secure and open custody differs to the standard definition – see Explanatory Notes, paragraph 38.

(e) The definition of persons in secure and open custody differs to the standard definition – see Explanatory Notes, paragraph 44.

(f) Refers to unsentenced persons in ACT prison custody and may include some sentenced prisoners – see Explanatory Notes, paragraph 43.

(g) ACT in ACT figures and ACT in NSW figures may not add to ACT total due to rounding.

(h) See footnotes a-e.

IMPRISONMENT RATES(a), By type of custody

	NSW(b)(c)	Vic.	Qld(d)	SA	WA(e)	Tas.	NT	ACT(f)(g)	Aust.(h)
PERSONS IN SECURE CUSTODY (RATE PER 100,000 ADULT POPULATION)									
2006	109.3	88.2	154.1	117.3	168.7	119.9	423.8	39.5	121.4
2007	111.5	93.9	152.5	129.0	174.9	127.3	410.9	37.5	124.9
2008	116.5	93.5	151.6	137.0	171.6	123.7	424.8	45.2	126.8
2008									
Jun Qtr	116.9	92.7	151.7	137.4	170.5	124.4	417.1	44.2	126.6
Sep Qtr	117.5	94.6	151.8	139.4	175.1	123.1	423.9	45.5	128.0
Dec Qtr	119.8	95.0	151.6	135.0	170.9	123.2	443.2	47.1	128.3
2009									
Mar Qtr	122.7	92.1	152.7	136.6	170.7	119.3	489.1	50.1	129.2
Jun Qtr	124.8	93.4	152.7	137.5	177.0	125.4	469.3	27.8	130.5
Apr	124.7	92.9	154.2	138.2	174.1	123.1	487.6	28.3	130.6
May	124.8	93.5	154.0	136.8	176.2	126.3	464.0	30.0	130.7
Jun	124.8	93.8	150.0	137.5	180.6	126.7	456.4	24.8	130.3
PERSONS IN OPEN CUSTODY (RATE PER 100,000 ADULT POPULATION)									
2006	66.3	9.8	26.0	14.7	58.8	19.9	128.5	32.5	38.6
2007	68.6	10.1	22.5	15.9	63.3	16.2	155.6	28.8	39.3
2008	66.0	10.9	18.3	16.5	63.2	15.3	176.8	22.4	37.9
2008									
Jun Qtr	65.4	10.7	18.8	16.0	59.8	15.0	173.4	24.6	37.4
Sep Qtr	66.8	11.1	19.1	16.0	61.1	14.5	182.2	18.5	38.1
Dec Qtr	64.0	11.1	17.6	18.0	68.7	14.9	186.0	18.1	37.8
2009									
Mar Qtr	64.2	10.2	16.0	17.1	69.9	15.0	207.7	14.1	37.5
Jun Qtr	67.1	10.8	18.3	17.3	75.2	13.8	207.5	34.1	39.9
Apr	66.2	10.6	17.0	17.6	71.5	14.5	208.8	34.3	39.0
May	67.4	11.0	17.7	17.3	74.5	13.3	202.8	33.0	39.8
Jun	67.6	10.9	20.3	17.2	79.5	13.5	210.9	35.1	41.0
PERSONS IN CUSTODY (RATE PER 100,000 ADULT POPULATION)									
2006	175.6	98.0	180.1	132.0	227.5	139.7	552.3	72.0	160.0
2007	180.1	104.0	175.0	144.9	238.2	143.4	566.5	66.3	164.2
2008	182.6	104.4	169.9	153.5	234.9	138.9	601.6	67.5	164.7
2008									
Jun Qtr	182.3	103.4	170.5	153.3	230.3	139.4	590.4	68.7	163.9
Sep Qtr	184.4	105.8	170.9	155.4	236.2	137.6	606.0	64.0	166.1
Dec Qtr	183.8	106.1	169.2	153.0	239.6	138.1	629.2	65.2	166.1
2009									
Mar Qtr	186.9	102.3	168.6	153.8	240.6	134.3	696.8	64.2	166.7
Jun Qtr	191.9	104.2	171.1	154.8	252.1	139.2	676.7	61.9	170.5
Apr	190.9	103.6	171.2	155.8	245.6	137.7	696.4	62.6	169.6
May	192.2	104.4	171.6	154.1	250.7	139.6	666.8	63.0	170.5
Jun	192.4	104.7	170.3	154.7	260.0	140.2	667.3	59.9	171.3

(a) Imprisonment rates are based on different sources – see Explanatory Notes, paragraphs 17–21.

(b) Excludes ACT prisoners held in NSW prisons.

(c) The classification of some NSW correctional facilities changed from March 2008 – see Explanatory Notes, paragraph 31.

(d) Data prior to the September quarter 2007 may be slightly overstated – see Explanatory Notes, paragraph 35.

(e) The definition of persons in secure and open custody differs to the standard definition - see Explanatory Notes, paragraph 38.

(f) The definition of persons in secure and open custody differs to the standard definition - see Explanatory Notes, paragraph 44.

(g) Includes ACT prisoners held in ACT as well as ACT prisoners held in NSW – see Explanatory Notes, paragraph 47.

(h) See footnotes c-f.

PERSONS IN FULL-TIME CUSTODY(a), By legal status

	NSW(b)	Vic.	Qld(c)	SA	WA	Tas.	NT	ACT in ACT(d)	ACT in NSW(b)	ACT Total(e)	Aust. (b) (c)
UNSENTENCED (NUMBER ON FIRST DAY OF MONTH)											
2006	2 221	700	1 176	548	603	120	164	65	—	65	5 597
2007	2 400	785	1 251	619	682	115	170	67	—	67	6 089
2008	2 545	836	1 223	650	752	112	213	92	—	92	6 423
2008											
Jun Qtr	2 571	855	1 255	645	756	117	198	86	—	86	6 482
Sep Qtr	2 523	827	1 227	668	791	113	214	92	—	92	6 456
Dec Qtr	2 532	869	1 151	640	739	104	228	107	—	107	6 370
2009											
Mar Qtr	2 727	813	1 162	654	688	107	279	112	—	112	6 543
Jun Qtr	2 714	877	1 170	677	746	123	271	71	—	71	6 649
SENTENCED (NUMBER ON FIRST DAY OF MONTH)											
2006	7 049	3 105	4 367	1 048	2 906	398	637	1	115	116	19 509
2007	7 170	3 351	4 312	1 161	3 073	419	687	1	101	101	20 174
2008	7 264	3 396	4 306	1 271	3 060	413	719	—	82	82	20 429
2008											
Jun Qtr	7 188	3 321	4 290	1 265	2 965	418	710	—	92	92	20 158
Sep Qtr	7 417	3 458	4 336	1 294	3 037	407	730	—	69	70	20 679
Dec Qtr	7 399	3 490	4 440	1 288	3 210	424	745	—	66	66	20 996
2009											
Mar Qtr	7 366	3 401	4 381	1 271	3 292	401	818	—	47	47	20 929
Jun Qtr	7 671	3 435	4 560	1 298	3 431	403	814	73	26	98	21 685
TOTAL (NUMBER ON FIRST DAY OF MONTH)											
2006	9 269	3 805	5 543	1 595	3 509	518	801	65	115	180	25 106
2007	9 570	4 137	5 563	1 781	3 755	534	857	68	101	168	26 264
2008	9 809	4 233	5 529	1 921	3 812	525	931	92	82	174	26 852
2008											
Jun Qtr	9 759	4 176	5 545	1 910	3 721	535	907	86	92	178	26 640
Sep Qtr	9 940	4 286	5 563	1 962	3 828	519	944	92	69	162	27 135
Dec Qtr	9 931	4 359	5 591	1 927	3 949	527	973	107	66	173	27 365
2009											
Mar Qtr	10 092	4 214	5 543	1 925	3 980	508	1 097	112	47	160	27 472
Jun Qtr	10 385	4 312	5 730	1 975	4 177	526	1 085	144	26	169	28 334
Apr	10 305	4 280	5 731	1 988	4 093	522	1 108	132	38	170	28 159
May	10 456	4 317	5 722	1 976	4 158	516	1 077	136	34	170	28 358
Jun	10 395	4 339	5 738	1 962	4 279	539	1 070	163	5	168	28 485

— nil or rounded to zero (including null cells)

(a) Figures for the quarter and year for first day of month counts are calculated as a simple average – see Explanatory Notes, paragraph 5.

(b) Includes ACT prisoners held in NSW prisons. The ACT in NSW figures are a subset of the NSW figures and are not separately counted in the Australian totals – see Explanatory Notes, paragraph 43.

(c) Data prior to the September quarter 2007 may be slightly overstated – see Explanatory Notes, paragraph 35.

(d) Data prior to the June quarter 2009 refers to unsentenced persons in ACT prison custody and may include some sentenced prisoners. From the June quarter 2009, the ACT commenced detaining sentenced ACT prisoners in the ACT – see Explanatory Notes, paragraph 43.

(e) ACT in ACT figures and ACT in NSW figures may not add to ACT total due to rounding.

IMPRISONMENT RATES(a), By legal status

	NSW(b)	Vic.	Qld(c)	SA	WA	Tas.	NT	ACT(d)	Aust. (c)
UNSENTENCED (RATE PER 100,000 ADULT POPULATION)									
2006	42.5	17.9	38.0	45.5	39.0	32.4	112.8	25.7	35.6
2007	45.6	19.7	39.3	50.5	43.0	30.7	112.7	25.8	38.0
2008	47.8	20.6	37.5	52.3	46.2	29.5	136.2	34.7	39.4
2008									
Jun Qtr	48.4	21.1	38.6	52.0	46.6	30.9	127.0	32.6	39.8
Sep Qtr	47.3	20.3	37.5	53.6	48.4	29.7	137.1	34.7	39.4
Dec Qtr	47.3	21.2	34.9	51.2	44.9	27.3	144.7	40.2	38.7
2009									
Mar Qtr	50.5	19.7	34.9	52.2	41.3	28.0	176.1	41.8	39.5
Jun Qtr	50.1	21.1	34.9	53.9	44.4	32.2	170.2	26.3	39.9
SENTENCED (RATE PER 100,000 ADULT POPULATION)									
2006	132.8	79.5	141.2	87.0	188.0	107.5	438.0	45.9	124.0
2007	134.4	84.1	135.5	94.7	194.0	111.8	454.8	39.1	125.9
2008	134.9	83.6	131.9	102.2	187.9	109.1	460.6	31.1	125.2
2008									
Jun Qtr	133.6	82.1	131.8	102.0	183.0	110.5	456.1	34.9	123.9
Sep Qtr	137.7	84.9	132.3	103.9	185.7	107.2	467.1	26.3	126.4
Dec Qtr	137.0	85.3	134.6	103.1	195.0	111.4	472.3	24.6	127.7
2009									
Mar Qtr	135.7	82.4	131.6	101.4	197.5	105.4	515.4	17.6	126.2
Jun Qtr	141.1	82.8	136.1	103.2	204.3	105.4	511.1	36.5	130.1
TOTAL (RATE PER 100,000 ADULT POPULATION)									
2006	175.4	97.5	179.3	132.4	227.0	139.9	550.8	71.6	159.6
2007	180.0	103.8	174.8	145.3	237.0	142.5	567.4	64.9	163.9
2008	182.7	104.2	169.3	154.6	234.1	138.6	596.8	65.8	164.5
2008									
Jun Qtr	182.0	103.2	170.4	154.0	229.6	141.5	583.2	67.5	163.7
Sep Qtr	185.0	105.2	169.8	157.5	234.1	136.9	604.2	60.9	165.8
Dec Qtr	184.3	106.5	169.6	154.3	239.8	138.7	617.0	64.8	166.4
2009									
Mar Qtr	186.2	102.1	166.5	153.5	238.8	133.5	691.5	59.5	165.7
Jun Qtr	191.2	103.9	171.0	157.0	248.7	137.6	681.3	62.8	170.0
Apr	189.5	103.1	171.0	158.1	243.7	136.7	695.7	63.0	169.0
May	192.4	104.0	170.8	157.1	247.6	135.1	676.3	63.0	170.1
Jun	191.8	104.6	171.2	156.0	254.8	141.1	671.9	62.3	170.9

(a) Imprisonment rates are based on different sources – see Explanatory Notes, paragraphs 17–21.

(b) Excludes ACT prisoners held in NSW prisons.

(c) Data prior to the September quarter 2007 may be slightly overstated – see Explanatory Notes, paragraph 35.

(d) Includes ACT prisoners held in ACT as well as ACT prisoners held in NSW – see Explanatory Notes, paragraph 47.

SENTENCED PRISONER RECEPTIONS INTO FULL-TIME CUSTODY(a)

	NSW(b)	Vic.	Qld	SA	WA	Tas.	NT	ACT in ACT(c)	ACT in NSW(b)	ACT Total	Aust. (b)
NUMBER											
2006	8 056	3 863	6 045	1 210	3 331	836	1 350	53	128	181	24 744
2007	8 625	3 914	7 027	1 457	3 805	753	1 394	30	128	158	27 005
2008	9 098	3 915	8 223	1 507	4 355	360	1 442	19	112	131	29 306
2008											
Jun Qtr	2 391	1 046	2 084	406	967	170	369	6	25	31	7 439
Sep Qtr	2 226	1 025	2 078	368	1 126	215	344	np	np	16	7 383
Dec Qtr	2 338	1 003	2 053	355	1 305	190	355	np	np	32	7 599
2009											
Mar Qtr	2 091	855	2 053	367	1 301	156	431	np	np	3	7 255
Jun Qtr	2 289	1 092	1 983	358	1 443	174	319	47	—	47	7 705

— nil or rounded to zero (including null cells)

np not available for publication but included in totals where applicable, unless otherwise indicated

(a) The count of sentenced prisoner receptions is an addition of the total number for each month within the reference period – see Explanatory Notes, paragraphs 2–5.

(b) Includes ACT prisoners held in NSW prisons. The ACT in NSW figures are a subset of the NSW figures and are not separately counted in the Australian totals – see Explanatory Notes, paragraph 43.

(c) From the June quarter 2009, ACT sentenced prisoner receptions are no longer detained in NSW prisons - see Explanatory Notes, paragraph 43.

PERSONS IN PERIODIC DETENTION(a)(b), By sex

	NSW		ACT	
	no.(c)	rate(d)	no.(c)	rate(d)
MALES				
2006	684	26.6	52	42.2
2007	685	26.5	54	42.7
2008	653	25.0	50	38.1
2008				
Jun Qtr	620	23.8	56	43.2
Sep Qtr	674	25.8	53	40.7
Dec Qtr	693	26.4	50	38.0
2009				
Mar Qtr	671	25.4	43	32.2
Jun Qtr	732	27.6	38	28.4
Apr	714	26.9	33	24.8
May	727	27.4	38	28.3
Jun	756	28.4	43	32.2
FEMALES				
2006	64	2.4	3	2.2
2007	74	2.8	5	4.1
2008	65	2.4	6	4.4
2008				
Jun Qtr	72	2.7	5	4.0
Sep Qtr	57	2.1	6	4.3
Dec Qtr	58	2.1	9	6.4
2009				
Mar Qtr	57	2.1	8	6.0
Jun Qtr	67	2.4	7	5.0
Apr	60	2.2	6	4.4
May	70	2.5	6	4.4
Jun	73	2.6	9	6.2
PERSONS				
2006	748	14.3	55	21.8
2007	759	14.4	60	23.0
2008	718	13.5	55	20.9
2008				
Jun Qtr	692	13.0	61	23.2
Sep Qtr	731	13.7	59	22.2
Dec Qtr	751	14.0	59	22.0
2009				
Mar Qtr	728	13.5	51	18.9
Jun Qtr	799	14.8	45	16.5
Apr	774	14.3	39	14.5
May	796	14.7	44	16.2
Jun	828	15.3	51	19.0

(a) Periodic detention is a form of custody only used in NSW and the ACT.

(b) Imprisonment rates are based on different sources – see Explanatory Notes, paragraphs 17–21.

(c) Average daily number.

(d) Rate per 100,000 adult population.

FEDERAL SENTENCED PERSONS IN FULL-TIME CUSTODY(a)(b), By sex

	NSW	Vic.	Qld	SA	WA	Tas.	NT	ACT	Aust.
MALES (NUMBER ON FIRST DAY OF MONTH)									
2006	334	76	57	12	64	9	12	3	565
2007	338	76	66	14	52	5	16	5	572
2008	327	83	68	22	43	6	13	2	563
2008									
Jun Qtr	320	80	71	24	43	4	18	1	562
Sep Qtr	324	89	69	20	40	7	9	1	559
Dec Qtr	336	87	67	21	39	9	12	2	572
2009									
Mar Qtr	345	82	79	16	42	8	12	1	584
Jun Qtr	344	86	82	16	46	8	12	—	595
FEMALES (NUMBER ON FIRST DAY OF MONTH)									
2006	51	5	17	3	10	5	2	—	93
2007	58	5	16	2	7	3	—	—	93
2008	73	7	22	3	8	6	—	—	121
2008									
Jun Qtr	73	8	23	3	7	6	—	1	122
Sep Qtr	73	8	22	5	8	9	1	—	126
Dec Qtr	73	7	23	4	10	7	1	—	124
2009									
Mar Qtr	70	6	19	4	11	4	2	—	117
Jun Qtr	66	7	19	4	10	3	1	—	110
PERSONS (NUMBER ON FIRST DAY OF MONTH)									
2006	385	81	74	15	74	14	14	3	658
2007	396	81	82	16	59	9	16	5	664
2008	399	90	90	25	52	12	13	2	684
2008									
Jun Qtr	393	89	94	27	51	11	18	2	684
Sep Qtr	398	97	90	24	48	16	10	2	685
Dec Qtr	409	94	89	25	48	15	13	2	696
2009									
Mar Qtr	416	87	98	20	54	12	14	1	701
Jun Qtr	410	93	101	21	56	11	13	—	705
Apr	403	91	103	19	55	np	13	np	697
May	409	92	97	22	56	np	13	np	698
Jun	418	95	102	21	58	np	13	np	719

— nil or rounded to zero (including null cells)

np not available for publication but included in totals where applicable, unless otherwise indicated

(a) Counts reflect the state or territory in which a prisoner was sentenced, not where they were held in custody.

(b) Figures for the quarter and year for the first day of the month counts are calculated as a simple average – see Explanatory Notes, paragraph 5.

INDIGENOUS PERSONS IN FULL-TIME CUSTODY(a), By sex

	NSW(b)	Vic.	Qld(c)	SA	WA	Tas.	NT	ACT in ACT(d)	ACT in NSW(b)	ACT Total(e)	Aust. (b) (c)
MALES (AVERAGE DAILY NUMBER)											
2006	1 716	202	1 379	281	1 274	53	637	8	9	17	5 548
2007	1 771	214	1 355	349	1 420	59	671	8	11	19	5 847
2008	1 852	229	1 364	383	1 444	59	736	12	8	20	6 080
2008											
Jun Qtr	1 836	226	1 402	391	1 394	58	723	11	8	19	6 042
Sep Qtr	1 882	237	1 361	375	1 463	61	741	12	7	19	6 133
Dec Qtr	1 874	231	1 341	386	1 520	60	776	14	9	24	6 202
2009											
Mar Qtr	1 970	231	1 378	412	1 532	61	875	18	6	24	6 476
Jun Qtr	2 061	226	1 460	404	1 574	63	845	19	2	21	6 652
Apr	2 039	225	1 447	414	1 541	60	867	17	3	21	6 611
May	2 070	230	1 468	395	1 566	66	833	19	2	21	6 647
Jun	2 073	224	1 464	404	1 615	62	835	22	—	22	6 699
FEMALES (AVERAGE DAILY NUMBER)											
2006	194	13	114	24	134	8	23	1	—	1	512
2007	209	15	115	29	175	7	32	1	—	1	584
2008	213	17	115	28	143	8	36	2	1	3	561
2008											
Jun Qtr	234	16	109	27	136	7	33	2	1	2	564
Sep Qtr	200	18	120	26	141	9	41	2	1	3	557
Dec Qtr	206	17	115	27	143	6	40	2	1	3	556
2009											
Mar Qtr	221	19	121	36	146	7	36	2	1	3	588
Jun Qtr	236	17	121	31	151	6	42	4	1	4	608
Apr	233	17	124	32	147	6	47	3	1	4	609
May	239	18	120	32	151	6	42	4	1	5	612
Jun	235	16	120	29	156	5	38	4	—	4	604
PERSONS (AVERAGE DAILY NUMBER)											
2006	1 910	215	1 492	305	1 408	61	660	9	9	18	6 060
2007	1 980	229	1 471	378	1 594	66	703	9	11	20	6 430
2008	2 065	245	1 478	411	1 587	67	773	14	9	23	6 641
2008											
Jun Qtr	2 070	242	1 511	418	1 530	65	756	13	8	22	6 605
Sep Qtr	2 082	255	1 482	401	1 604	70	782	15	8	22	6 690
Dec Qtr	2 080	248	1 456	413	1 663	67	815	17	10	27	6 758
2009											
Mar Qtr	2 191	250	1 499	448	1 678	67	911	20	7	27	7 064
Jun Qtr	2 296	243	1 581	435	1 725	69	887	23	2	26	7 261
Apr	2 272	242	1 571	446	1 688	67	914	20	4	25	7 220
May	2 309	248	1 588	427	1 717	72	874	23	3	26	7 259
Jun	2 308	239	1 584	433	1 770	68	874	26	—	26	7 302

— nil or rounded to zero (including null cells)

(a) Excludes persons whose Indigenous status is unknown – see Explanatory Notes, paragraph 30.

(b) Includes ACT prisoners held in NSW prisons. The ACT in NSW figures are a subset of the NSW figures and are not separately counted in the Australian totals – see Explanatory Notes, paragraph 43.

(c) Data prior to the September quarter 2007 may be slightly overstated – see Explanatory Notes, paragraph 35.

(d) Data prior to the June quarter 2009 refers to unsentenced persons in ACT prison custody and may include some sentenced prisoners. From the June quarter 2009, the ACT commenced detaining sentenced ACT prisoners in the ACT – see Explanatory Notes, paragraph 43.

(e) ACT in ACT figures and ACT in NSW figures may not add to ACT total due to rounding.

INDIGENOUS IMPRISONMENT RATES(a)(b), By sex

	NSW(c)	Vic.	Qld(d)	SA	WA	Tas.	NT	ACT(e)	Aust.(d)
MALES (RATE PER 100,000 ADULT INDIGENOUS POPULATION)									
2006	4 318.0	2 288.5	3 604.8	3 591.2	6 382.1	1 038.6	3 577.3	1 366.7	4 006.0
2007	4 344.4	2 350.2	3 437.0	4 358.6	6 925.4	1 124.6	3 694.1	1 483.6	4 111.4
2008	4 441.5	2 427.3	3 348.3	4 669.6	6 863.4	1 107.1	3 969.5	1 552.3	4 160.6
2008									
Jun Qtr	4 402.7	2 403.0	3 441.3	4 764.2	6 625.7	1 088.5	3 897.8	1 472.6	4 134.6
Sep Qtr	4 515.9	2 522.5	3 341.6	4 565.3	6 952.3	1 141.6	3 997.5	1 487.4	4 197.2
Dec Qtr	4 491.3	2 454.5	3 291.1	4 703.3	7 224.1	1 125.2	4 182.0	1 810.9	4 244.4
2009									
Mar Qtr	4 604.5	2 375.6	3 280.9	4 878.9	7 074.1	1 106.4	4 603.2	1 764.8	4 308.2
Jun Qtr	4 828.0	2 322.6	3 474.7	4 784.9	7 268.5	1 147.0	4 447.5	1 579.5	4 425.2
Apr	4 772.3	2 312.4	3 444.5	4 900.6	7 117.1	1 100.8	4 565.0	1 546.5	4 397.8
May	4 850.1	2 358.1	3 494.5	4 675.7	7 233.2	1 201.2	4 382.6	1 557.0	4 421.6
Jun	4 860.8	2 296.1	3 484.6	4 782.2	7 456.3	1 137.2	4 396.9	1 635.9	4 456.2
FEMALES (RATE PER 100,000 ADULT INDIGENOUS POPULATION)									
2006	463.9	145.0	270.8	291.3	628.1	149.4	124.9	78.3	346.2
2007	488.2	158.1	267.7	336.1	793.4	138.5	167.3	68.6	384.5
2008	483.5	171.9	258.9	309.1	633.5	139.8	188.5	227.5	361.0
2008									
Jun Qtr	532.4	167.6	245.8	303.4	599.9	130.5	169.5	186.9	362.5
Sep Qtr	454.9	184.5	272.2	292.8	622.9	159.8	210.3	207.4	358.2
Dec Qtr	466.7	172.9	260.4	300.0	634.2	115.5	205.1	213.1	357.4
2009									
Mar Qtr	489.5	184.9	265.4	389.0	630.1	119.7	183.5	244.7	368.5
Jun Qtr	522.1	172.2	267.1	338.6	651.9	103.6	213.8	324.7	381.3
Apr	515.9	173.2	272.3	349.4	634.0	114.0	236.7	274.6	381.9
May	528.9	184.7	264.6	349.4	650.6	101.2	210.8	380.2	383.8
Jun	521.4	158.5	264.4	316.7	671.0	95.7	194.1	317.6	378.2
PERSONS (RATE PER 100,000 ADULT INDIGENOUS POPULATION)									
2006	2 336.5	1 202.2	1 860.2	1 881.1	3 404.6	586.0	1 810.6	715.1	2 116.2
2007	2 361.1	1 238.5	1 781.5	2 269.4	3 750.4	623.2	1 891.0	767.6	2 187.5
2008	2 407.0	1 283.9	1 740.0	2 401.5	3 637.1	617.0	2 038.5	882.9	2 201.6
2008									
Jun Qtr	2 413.3	1 269.8	1 777.7	2 444.0	3 505.1	603.1	1 993.8	822.9	2 189.8
Sep Qtr	2 428.5	1 337.3	1 743.6	2 343.0	3 674.4	644.1	2 063.4	840.6	2 217.9
Dec Qtr	2 422.6	1 297.9	1 713.3	2 412.9	3 811.3	613.6	2 151.0	1 003.5	2 240.3
2009									
Mar Qtr	2 491.0	1 265.2	1 714.1	2 543.4	3 740.6	607.5	2 350.6	996.3	2 279.4
Jun Qtr	2 616.5	1 232.7	1 808.1	2 472.1	3 845.6	619.3	2 289.7	945.2	2 342.9
Apr	2 586.2	1 228.1	1 796.3	2 533.2	3 763.3	601.8	2 359.0	903.5	2 329.9
May	2 630.8	1 256.5	1 816.3	2 425.3	3 828.0	644.9	2 256.3	962.1	2 342.4
Jun	2 632.1	1 212.6	1 811.5	2 459.4	3 946.2	610.5	2 254.8	969.4	2 356.4

(a) The rates calculation uses the Indigenous population projections for 30 June of that calendar year as the denominator – see Explanatory Notes, paragraphs 22–24.

(b) Excludes persons whose Indigenous status is unknown – see Explanatory Notes, paragraph 30.

(c) Excludes ACT prisoners held in NSW prisons.

(d) Data prior to the September quarter 2007 may be slightly overstated – see Explanatory Notes, paragraph 35.

(e) Includes ACT prisoners held in ACT as well as ACT prisoners held in NSW – see Explanatory Notes, paragraph 47.

INDIGENOUS PERSONS IN FULL-TIME CUSTODY(a)(b), By legal status

	NSW(c)	Vic.	Qld(d)	SA	WA	Tas.	NT	ACT in ACT(e)	ACT in NSW(c)	ACT Total(f)	Aust. (c)(d)
UNSENTENCED (NUMBER ON FIRST DAY OF MONTH)											
2006	441	48	285	116	241	19	140	10	—	10	1 300
2007	451	52	331	160	278	14	143	9	—	9	1 437
2008	492	52	335	169	307	15	174	14	—	14	1 560
2008											
Jun Qtr	507	53	355	181	319	15	163	14	—	14	1 607
Sep Qtr	462	52	341	154	313	13	176	14	—	14	1 526
Dec Qtr	486	54	293	169	300	16	182	16	—	16	1 516
2009											
Mar Qtr	569	53	312	197	300	18	238	19	—	19	1 707
Jun Qtr	551	42	310	185	305	21	220	15	—	15	1 648
SENTENCED (NUMBER ON FIRST DAY OF MONTH)											
2006	1 473	166	1 206	193	1 162	42	518	—	10	10	4 761
2007	1 520	176	1 135	217	1 311	53	564	—	10	10	4 975
2008	1 563	192	1 140	243	1 274	53	592	—	9	9	5 056
2008											
Jun Qtr	1 544	184	1 157	247	1 211	51	580	—	9	9	4 975
Sep Qtr	1 628	202	1 149	248	1 266	55	603	—	8	8	5 151
Dec Qtr	1 592	196	1 155	240	1 363	53	620	—	10	10	5 220
2009											
Mar Qtr	1 596	196	1 164	249	1 372	48	668	—	6	6	5 293
Jun Qtr	1 736	203	1 264	260	1 407	49	675	8	3	11	5 602
TOTAL (NUMBER ON FIRST DAY OF MONTH)											
2006	1 913	214	1 492	309	1 404	61	659	10	10	19	6 061
2007	1 971	228	1 466	377	1 589	67	706	9	10	19	6 412
2008	2 056	244	1 475	413	1 581	67	766	14	9	23	6 616
2008											
Jun Qtr	2 050	237	1 512	429	1 530	67	744	14	9	22	6 582
Sep Qtr	2 090	253	1 490	402	1 579	68	779	14	8	22	6 677
Dec Qtr	2 077	251	1 448	410	1 663	69	802	16	10	26	6 736
2009											
Mar Qtr	2 165	249	1 476	447	1 672	66	906	19	6	25	7 000
Jun Qtr	2 287	245	1 573	445	1 712	70	896	23	3	26	7 250

— nil or rounded to zero (including null cells)

- (a) Figures for the quarter and year for first day of the month counts are calculated as a simple average – see Explanatory Notes, paragraph 5.
- (b) Excludes persons whose Indigenous status is unknown – see Explanatory Notes, paragraph 30.
- (c) Includes ACT prisoners held in NSW prisons. The ACT in NSW figures are a subset of the NSW figures and are not separately counted in the Australian totals – see Explanatory Notes, paragraph 43.

- (d) Data prior to the September quarter 2007 may be slightly overstated – see Explanatory Notes, paragraph 35.
- (e) Data prior to the June quarter 2009 refers to unsentenced persons in ACT prison custody and may include some sentenced prisoners. From the June quarter 2009, the ACT commenced detaining sentenced ACT prisoners in the ACT – see Explanatory Notes, paragraph 43.
- (f) ACT in ACT figures and ACT in NSW figures may not add to ACT total due to rounding.

INDIGENOUS IMPRISONMENT RATES(a)(b)(c), By legal status

	NSW(d)	Vic.	Qld(e)	SA	WA	Tas.	NT	ACT(f)	Aust.(e)
UNSENTENCED (RATE PER 100,000 ADULT INDIGENOUS POPULATION)									
2006	541.4	267.6	355.5	714.2	583.6	184.2	384.3	376.8	453.8
2007	540.3	281.1	401.5	960.8	653.0	133.0	383.2	335.8	488.8
2008	576.2	274.1	394.7	990.6	703.8	135.2	460.2	529.5	517.1
2008									
Jun Qtr	593.0	275.8	417.8	1 060.2	730.2	141.3	431.0	516.9	532.6
Sep Qtr	541.1	270.6	400.9	898.5	718.0	122.9	465.3	542.1	505.8
Dec Qtr	568.4	284.6	344.4	990.1	687.4	144.4	480.2	605.1	502.5
2009									
Mar Qtr	649.4	266.7	356.8	1 120.8	668.7	165.2	615.1	711.8	550.8
Jun Qtr	628.1	212.7	354.1	1 048.9	679.8	186.2	568.7	540.0	531.7
SENTENCED (RATE PER 100,000 ADULT INDIGENOUS POPULATION)									
2006	1 798.8	929.3	1 503.6	1 191.0	2 810.5	403.8	1 421.4	380.1	1 662.5
2007	1 810.2	952.4	1 374.7	1 300.9	3 084.6	497.4	1 515.7	400.4	1 692.5
2008	1 818.9	1 003.9	1 341.3	1 421.3	2 919.8	485.5	1 560.9	343.5	1 676.2
2008									
Jun Qtr	1 796.6	963.7	1 362.0	1 446.1	2 774.9	473.2	1 531.3	327.8	1 649.3
Sep Qtr	1 896.5	1 056.2	1 352.6	1 450.0	2 900.9	507.0	1 591.1	290.0	1 707.7
Dec Qtr	1 850.8	1 028.3	1 359.3	1 405.2	3 123.2	491.6	1 636.8	390.8	1 730.5
2009									
Mar Qtr	1 813.5	992.7	1 331.4	1 416.2	3 058.2	429.4	1 724.0	208.6	1 708.0
Jun Qtr	1 977.0	1 026.4	1 445.0	1 476.8	3 135.5	441.4	1 743.0	417.3	1 807.7
TOTAL (RATE PER 100,000 ADULT INDIGENOUS POPULATION)									
2006	2 340.2	1 196.9	1 859.1	1 905.2	3 394.1	588.0	1 805.8	757.0	2 116.2
2007	2 350.5	1 233.5	1 776.2	2 261.6	3 737.6	630.4	1 898.9	736.1	2 181.3
2008	2 395.2	1 278.0	1 736.1	2 411.9	3 623.7	620.6	2 021.2	873.0	2 193.3
2008									
Jun Qtr	2 389.6	1 239.5	1 779.8	2 506.4	3 505.1	614.5	1 962.2	844.7	2 182.0
Sep Qtr	2 437.6	1 326.8	1 753.5	2 348.5	3 618.9	629.9	2 056.3	832.1	2 213.5
Dec Qtr	2 419.3	1 312.9	1 703.7	2 395.3	3 810.6	636.0	2 117.0	996.0	2 233.0
2009									
Mar Qtr	2 462.9	1 259.4	1 688.2	2 537.0	3 726.9	594.5	2 339.2	920.5	2 258.8
Jun Qtr	2 605.0	1 239.1	1 799.1	2 525.7	3 815.3	627.6	2 311.6	957.3	2 339.3

- (a) The rates calculation uses the Indigenous population projection for 30 June of the relevant calendar year as the denominator – see Explanatory Notes, paragraphs 22–24.
- (b) Figures for the quarter and year for first day of the month counts are calculated as a simple average – see Explanatory Notes, paragraph 5.
- (c) Excludes persons whose Indigenous status is unknown – see Explanatory Notes, paragraph 30.
- (d) Excludes ACT prisoners in NSW prisons.
- (e) Data prior to the September quarter 2007 may be slightly overstated – see Explanatory Notes, paragraph 35.
- (f) Includes ACT prisoners held in ACT as well as ACT prisoners held in NSW – see Explanatory Notes, paragraph 47.

PERSONS IN COMMUNITY-BASED CORRECTIONS(a)(b), By sex

	NSW	Vic.	Qld	SA(c)	WA(d)(e)	Tas.	NT	ACT	Aust.(f)
MALES (NUMBER ON FIRST DAY OF MONTH)									
2006	15 140	6 214	9 468	4 552	4 203	935	1 011	914	42 438
2007	15 195	6 245	9 928	4 586	4 071	913	1 036	977	42 950
2008	15 075	6 431	11 283	4 752	4 326	908	963	1 100	44 838
2008									
Jun Qtr	15 174	6 297	11 164	4 696	4 309	915	1 012	1 081	44 648
Sep Qtr	14 986	6 370	11 537	4 777	4 323	889	913	1 141	44 936
Dec Qtr	15 178	6 612	11 566	4 904	4 355	916	927	1 123	45 579
2009									
Mar Qtr	15 452	6 539	r11 487	4 961	4 405	951	955	1 162	r45 913
Jun Qtr	15 387	6 735	11 413	4 956	4 475	996	973	1 164	46 100
Apr	15 440	6 554	11 405	4 962	4 534	988	956	1 185	46 024
May	15 358	6 761	11 406	4 971	4 470	996	980	1 160	46 102
Jun	15 363	6 889	11 429	4 935	4 422	1 004	983	1 148	46 173
FEMALES (NUMBER ON FIRST DAY OF MONTH)									
2006	2 649	1 345	2 656	1 045	1 192	249	144	168	9 447
2007	2 739	1 438	2 656	1 084	1 158	246	138	161	9 619
2008	2 812	1 501	2 838	1 135	1 219	235	137	200	10 078
2008									
Jun Qtr	2 852	1 468	2 845	1 144	1 249	235	140	196	10 128
Sep Qtr	2 839	1 487	2 848	1 148	1 234	232	131	206	10 126
Dec Qtr	2 797	1 532	2 877	1 140	1 192	241	141	221	10 142
2009									
Mar Qtr	2 755	1 466	r2 924	1 129	1 203	243	145	228	r10 092
Jun Qtr	2 802	1 509	2 925	1 093	1 222	251	153	224	10 178
Apr	2 755	1 471	2 922	1 087	1 204	251	152	222	10 064
May	2 826	1 518	2 932	1 083	1 224	253	151	227	10 214
Jun	2 824	1 538	2 922	1 109	1 237	248	155	223	10 256
PERSONS (NUMBER ON FIRST DAY OF MONTH) (g)									
2006	17 843	7 601	12 124	5 597	5 395	1 184	1 155	1 082	51 981
2007	18 002	7 710	12 584	5 671	5 229	1 159	1 173	1 138	52 665
2008	17 954	7 950	14 120	5 888	5 545	1 143	1 100	1 301	55 001
2008									
Jun Qtr	18 089	7 787	14 009	5 840	5 558	1 150	1 152	1 277	54 862
Sep Qtr	17 898	7 874	14 385	5 926	5 557	1 121	1 044	1 347	55 152
Dec Qtr	18 052	8 150	14 443	6 045	5 547	1 158	1 068	1 344	55 806
2009									
Mar Qtr	18 280	8 012	r14 411	6 093	5 608	1 195	1 100	1 390	r56 089
Jun Qtr	18 269	8 249	14 339	6 050	5 699	1 247	1 126	1 388	56 366
Apr	18 273	8 031	14 327	6 050	5 740	1 239	1 108	1 407	56 175
May	18 264	8 284	14 338	6 055	5 696	1 249	1 131	1 387	56 404
Jun	18 270	8 431	14 351	6 045	5 661	1 252	1 138	1 371	56 519

r revised

- (a) Figures include persons with breached or suspended orders, with the exception of Vic. and Tas.
- (b) Figures for the quarter and year for first day of the month counts are calculated as a simple average – see Explanatory Notes, paragraph 5.
- (c) Data movements may be influenced by data entry delays – see Explanatory Notes, paragraph 37.

- (d) Data prior to the March quarter 2007 may be slightly overstated – see Explanatory Notes, paragraph 40.
- (e) Data are subject to processing delays of 4 to 6 weeks – see Explanatory Notes, paragraph 39.
- (f) See footnotes c-e.
- (g) Includes persons whose sex is unknown.

COMMUNITY-BASED CORRECTIONS RATES(a)(b)(c), By sex

	NSW	Vic.	Qld	SA(d)	WA(e)(f)	Tas.	NT	ACT	Aust.(g)
MALES (RATE PER 100,000 ADULT POPULATION)									
2006	588.9	326.1	616.9	769.9	545.6	517.5	1 306.7	740.5	547.3
2007	588.6	320.2	629.2	764.7	512.8	500.7	1 307.0	766.0	544.2
2008	577.8	323.4	697.4	782.0	528.7	492.6	1 181.4	844.5	557.9
2008									
Jun Qtr	583.0	317.9	692.7	774.7	529.4	497.2	1 245.6	834.1	557.4
Sep Qtr	573.2	319.6	710.7	784.5	526.0	481.1	1 118.7	874.2	557.6
Dec Qtr	578.4	330.0	707.8	802.7	525.8	495.0	1 123.7	854.8	562.7
2009									
Mar Qtr	584.3	323.1	r696.0	809.5	524.6	513.5	1 158.6	879.0	r561.9
Jun Qtr	579.2	331.0	687.0	805.9	528.7	535.6	1 175.8	876.5	561.1
Apr	581.2	322.1	686.5	806.9	535.6	531.3	1 155.2	892.1	560.2
May	578.2	332.3	686.5	808.4	528.0	535.6	1 184.2	873.3	561.2
Jun	578.3	338.6	687.9	802.5	522.4	539.9	1 187.8	864.2	562.0
FEMALES (RATE PER 100,000 ADULT POPULATION)									
2006	100.0	67.4	170.6	170.4	153.8	131.2	211.0	130.8	118.4
2007	102.3	70.7	165.5	173.2	146.5	127.7	191.4	121.7	118.3
2008	103.6	72.4	172.2	178.7	150.5	121.0	184.1	148.9	121.7
2008									
Jun Qtr	105.3	71.0	173.2	180.4	154.8	120.9	188.7	146.1	122.6
Sep Qtr	104.4	71.5	172.3	180.3	151.8	119.1	175.9	153.1	121.9
Dec Qtr	102.5	73.4	173.0	178.7	145.7	123.7	187.3	163.1	121.6
2009									
Mar Qtr	100.2	69.7	r174.1	176.1	145.4	124.6	190.3	167.2	r120.0
Jun Qtr	101.4	71.3	173.2	170.0	146.7	127.9	199.6	163.7	120.4
Apr	99.8	69.5	173.0	169.1	144.6	128.0	198.7	162.2	119.1
May	102.3	71.8	173.5	168.5	147.0	129.1	197.4	165.9	120.9
Jun	102.3	72.7	173.0	172.5	148.5	126.5	202.6	162.9	121.4
PERSONS (RATE PER 100,000 ADULT POPULATION) (h)									
2006	341.9	194.7	392.2	464.7	349.0	319.5	794.1	430.1	330.4
2007	342.3	193.5	395.3	462.7	330.1	309.3	776.4	438.4	328.7
2008	337.3	195.7	432.4	473.7	340.6	301.9	704.9	491.1	337.0
2008									
Jun Qtr	340.6	192.4	430.5	470.9	342.9	304.1	740.4	484.3	337.2
Sep Qtr	335.5	193.3	439.0	475.8	339.9	295.4	668.2	507.8	337.0
Dec Qtr	337.2	199.2	438.0	483.9	336.9	304.4	676.8	503.6	339.4
2009									
Mar Qtr	338.9	194.1	r432.8	486.0	336.4	313.9	693.4	517.6	r338.3
Jun Qtr	337.2	198.8	427.9	481.0	339.4	326.4	706.8	514.8	338.2
Apr	337.3	193.5	427.6	481.0	341.8	324.4	695.7	521.7	337.0
May	337.1	199.6	427.9	481.4	339.2	327.0	710.2	514.3	338.4
Jun	337.2	203.2	428.3	480.6	337.1	327.8	714.6	508.3	339.1

r revised

(a) Imprisonment rates are based on different sources – see Explanatory Notes, paragraphs 17–21.

(b) Figures include persons with breached or suspended orders, with the exception of Vic. and Tas.

(c) Figures for the quarter and year for the first day of the month are calculated as a simple average – see Explanatory Notes, paragraph 5.

(d) Data movements may be influenced by data entry delays – see Explanatory Notes, paragraph 37.

(e) Data prior to the March quarter 2007 may be slightly overstated – see Explanatory Notes, paragraph 40.

(f) Data are subject to processing delays of 4 to 6 weeks – see Explanatory Notes, paragraph 39.

(g) See footnotes d-f.

(h) Includes persons whose sex is unknown.

	NSW	Vic.	Qld(d)	SA(e)	WA(f)(g)	Tas.(h)	NT	ACT(i)	Aust.(j)
RESTRICTED MOVEMENT (NUMBER ON FIRST DAY OF MONTH)									
2006	205	25	44	424	10	..	38	..	746
2007	197	31	..	391	5	..	34	..	659
2008	151	31	..	421	6	..	32	..	640
2008									
Jun Qtr	135	31	..	426	5	..	38	..	635
Sep Qtr	168	29	..	421	6	..	27	..	651
Dec Qtr	177	29	..	463	5	..	30	..	704
2009									
Mar Qtr	177	38	..	482	3	..	27	..	728
Jun Qtr	176	33	..	441	4	..	36	..	690
Apr	174	np	..	436	np	..	36	..	687
May	176	np	..	443	np	..	38	..	694
Jun	179	np	..	443	np	..	33	..	689
REPARATION-FINE OPTION (NUMBER ON FIRST DAY OF MONTH)									
2006	84	1 214	1 321	774	240	112	1	..	3 744
2007	49	1 710	843	702	192	85	—	..	3 580
2008	16	1 763	542	646	208	50	—	..	3 224
2008									
Jun Qtr	12	1 803	589	659	197	55	—	..	3 316
Sep Qtr	12	1 602	563	648	229	41	—	..	3 095
Dec Qtr	23	1 613	454	614	210	37	—	..	2 952
2009									
Mar Qtr	20	1 673	r410	599	240	36	—	..	r2 978
Jun Qtr	22	1 751	460	594	330	29	—	..	3 186
Apr	17	1 719	442	602	301	31	—	..	3 112
May	24	1 731	455	580	335	30	—	..	3 155
Jun	25	1 803	482	601	354	25	—	..	3 290
REPARATION-COMMUNITY SERVICE (NUMBER ON FIRST DAY OF MONTH)									
2006	4 436	876	2 045	1 125	1 967	501	198	85	11 233
2007	4 160	672	1 857	1 033	1 622	495	221	115	10 174
2008	3 979	679	1 854	1 005	1 473	500	184	161	9 835
2008									
Jun Qtr	4 042	673	1 869	988	1 494	485	193	166	9 911
Sep Qtr	3 967	728	1 857	1 034	1 454	503	168	170	9 881
Dec Qtr	4 014	678	1 852	1 043	1 408	527	172	169	9 863
2009									
Mar Qtr	4 046	697	r1 823	1 090	1 377	555	172	172	r9 932
Jun Qtr	4 252	740	1 887	1 116	1 406	579	172	195	10 347
Apr	4 208	706	1 860	1 096	1 384	579	163	204	10 200
May	4 255	752	1 899	1 116	1 378	578	175	197	10 350
Jun	4 293	761	1 902	1 137	1 456	580	177	185	10 491

.. not applicable

— nil or rounded to zero (including null cells)

np not available for publication but included in totals where applicable, unless otherwise indicated

r revised

(a) If a person has more than one type of order, they are counted against each order in this table. If a person has more than one order of the same order type, they are counted only once in the order type.

(b) Figures for the quarter and year for first day of the month counts are calculated as a simple average – see Explanatory Notes, paragraph 5.

(c) Figures include persons with breached or suspended orders, with the exception of Vic. and Tas.

(d) From July 2006, restricted movement and parole orders have been affected by legislative changes – see Explanatory Notes, paragraph 36.

(e) Data movements may be influenced by data entry delays – see Explanatory Notes, paragraph 37.

(f) Data prior to the March quarter 2007 may be slightly overstated – see Explanatory Notes, paragraph 40.

(g) Data are subject to processing delays of 4 to 6 weeks – see Explanatory Notes, paragraph 39.

(h) Tas. conducted a trial of new bail orders in the 2007-08 financial year – see Explanatory Notes, paragraph 41.

(i) Data movements for bail orders may be influenced by data quality checks during the December quarter 2008 – see Explanatory Notes, paragraph 45.

(j) See footnotes d-i.

	NSW	Vic.	Qld(d)	SA(e)	WA(f)(g)	Tas.(h)	NT	ACT(i)	Aust.(j)
SUPERVISION (COMPLIANCE)–PAROLE (NUMBER ON FIRST DAY OF MONTH)									
2006	3 949	1 460	975	894	1 279	86	113	136	8 890
2007	4 058	1 413	2 290	882	1 143	81	99	117	10 083
2008	4 246	1 494	3 793	903	1 317	96	90	113	12 051
2008									
Jun Qtr	4 180	1 495	3 655	893	1 326	91	102	117	11 857
Sep Qtr	4 255	1 505	3 969	904	1 309	101	84	114	12 241
Dec Qtr	4 387	1 500	4 127	942	1 342	109	76	103	12 587
2009									
Mar Qtr	4 339	1 508	r4 185	983	1 426	116	75	96	r12 728
Jun Qtr	4 201	1 470	4 048	985	1 361	124	73	100	12 363
Apr	4 202	1 455	4 056	987	1 467	122	71	102	12 462
May	4 224	1 479	4 045	981	1 374	123	75	98	12 399
Jun	4 177	1 477	4 043	987	1 243	126	73	101	12 227

SUPERVISION (COMPLIANCE)–BAIL (NUMBER ON FIRST DAY OF MONTH)									
2006	214	888	243	..	4	174	1 523
2007	226	1 019	245	8	7	215	1 721
2008	226	858	275	18	5	229	1 612
2008									
Jun Qtr	220	859	262	28	6	230	1 605
Sep Qtr	233	838	296	4	6	268	1 645
Dec Qtr	222	844	292	..	4	181	1 544
2009									
Mar Qtr	215	867	276	..	10	194	1 561
Jun Qtr	212	881	288	..	20	199	1 599
Apr	211	879	279	..	12	199	1 580
May	212	898	278	..	20	197	1 605
Jun	213	865	307	..	27	201	1 613

SUPERVISION (COMPLIANCE)–SENTENCED PROBATION (NUMBER ON FIRST DAY OF MONTH)									
2006	10 923	4 294	8 855	2 631	3 556	642	837	784	32 523
2007	11 198	4 093	8 680	2 803	3 485	645	853	840	32 598
2008	11 098	4 184	9 040	3 161	3 645	636	819	1 026	33 609
2008									
Jun Qtr	11 274	4 089	9 032	3 115	3 657	620	847	997	33 631
Sep Qtr	11 030	4 271	9 121	3 211	3 653	626	788	1 057	33 756
Dec Qtr	10 988	4 250	9 097	3 271	3 600	663	810	1 107	33 785
2009									
Mar Qtr	11 212	4 428	r9 081	3 267	3 557	683	841	1 146	r34 217
Jun Qtr	11 299	4 502	9 033	3 198	3 582	711	855	1 131	34 310
Apr	11 342	4 359	9 065	3 205	3 561	707	855	1 148	34 242
May	11 287	4 528	9 025	3 198	3 574	711	852	1 125	34 300
Jun	11 267	4 620	9 008	3 190	3 610	715	858	1 120	34 388

.. not applicable

r revised

- (a) If a person has more than one type of order, they are counted against each order in this table. If a person has more than one order of the same order type, they are counted only once in the order type.
- (b) Figures for the quarter and year for first day of the month counts are calculated as a simple average – see Explanatory Notes, paragraph 5.
- (c) Figures include persons with breached or suspended orders, with the exception of Vic. and Tas.
- (d) From July 2006, restricted movement and parole orders have been affected by legislative changes – see Explanatory Notes, paragraph 36.

(e) Data movements may be influenced by data entry delays – see Explanatory Notes, paragraph 37.

(f) Data prior to the March quarter 2007 may be slightly overstated – see Explanatory Notes, paragraph 40.

(g) Data are subject to processing delays of 4 to 6 weeks – see Explanatory Notes, paragraph 39.

(h) Tas. conducted a trial of new bail orders in the 2007-08 financial year – see Explanatory Notes, paragraph 41.

(i) Data movements for bail orders may be influenced by data quality checks during the December quarter 2008 – see Explanatory Notes, paragraph 45.

(j) See footnotes d-i.

EXPLANATORY NOTES

INTRODUCTION

1 This publication presents statistical series on persons held in either adult corrective services custody or who are serving adult community-based orders in Australia. It contains data on the number of persons by their sex, Indigenous status, type of custody, legal status and sentence type; the number of sentenced persons received into corrective services custody each month; and the number of federal prisoners. Experimental data on Indigenous persons in community based corrections are also available in the Appendix.

2 Statistics presented in this publication are compiled in three ways:

- Average daily prisoner population: Counts taken on each day of the month are summed and divided by the number of days in that month to determine the average daily prisoner population for that month. The average daily periodic detainee population is a count of persons on periodic detention on each day a centre is open, divided by the number of days a centre is open.
- Sentenced prisoner reception figures: Counts are provided each month on the number of receptions where a prisoner is received as a sentenced prisoner. This includes prisoners with a change of legal status from unsentenced to sentenced.
- First day of the month prisoner population: Counts of prisoners and persons serving community-based corrections orders, taken on or near the first day of the month (see paragraphs 4 and 5).

3 Although national standards and classifications are used in the compilation of these statistics, some discrepancies remain between the states and territories. These are due to legislative and procedural differences between jurisdictions and the way that these differences are reflected in agencies' administrative data systems. As part of its quality assurance strategy, the ABS is working with corrective services agencies to minimise the effect of these differences.

REFERENCE PERIOD

4 The reference period for average daily prisoner population statistics and sentenced reception counts is the complete reference month. The reference date for all other figures is the first day of the reference month. However, not all states and territories report strictly according to this 'first day of the month' rule:

- The Western Australian and Australian Capital Territory prisoners in New South Wales prisons populations are counted as at midnight on the last day of the month. In these cases the figures provided are taken to represent the prison population at the beginning of the following month to align with practices in other states and territories.

5 Calculation of figures for the entire quarter and entire year varies depending on the counting unit and method of counting prisoners:

- Average daily figures: Figures are calculated by weighting the average according to the number of days in each month, quarter or year.
- First day of the month: Figures are simple averages. For quarterly figures, the sum of the monthly data is divided by three; for yearly figures, the figures for each month are added and the total divided by twelve.
- Sentenced receptions: Figures are totals of each month.
- These figures may be subject to rounding.

SCOPE

6 The scope of the statistics in this publication includes all persons remanded or sentenced to adult custodial corrective services agencies (including Work Outreach Camps and Community Custody Centres in Queensland), or who are serving adult community-based orders in each state and territory in Australia.

EXPLANATORY NOTES *continued*

SCOPE *continued*

7 Counts of prisoners in the following custodial facilities are included in the collection:

- gazetted prisons in all jurisdictions;
- periodic detention centres in New South Wales and the Australian Capital Territory;
- community custody centres and work outreach camps in Queensland;
- cells in court complexes administered by corrective services in New South Wales;
- transitional centres in New South Wales; and
- lock-ups in Western Australia operated by the police but designated as a prison by the Chief Executive Officer of Corrective Services.

8 The prisons and community corrections collection excludes the following custodial facilities:

- police lockups, police prisons and cells in court complexes not administered and controlled by corrective services;
- gazetted police prisons in the Northern Territory;
- juvenile detention centres, including those under the authority of adult corrective services;
- immigration detention centres; and
- military prisons.

9 This collection includes counts of persons remanded or sentenced to adult custody facilities, or directed to serve community based orders administered by adult corrective services agencies. In all states and territories except Queensland, persons are considered adults if aged 18 years and over. In Queensland persons are considered adults if aged 17 years and over. The vast majority of persons counted in the collection are adults. However, juveniles may be included in exceptional circumstances.

10 Since December 2004, the Kariong Juvenile Correctional Centre in New South Wales has operated under the authority of adult corrective services. The population at Kariong Juvenile Correctional Centre may include adult persons as well as juveniles. New South Wales includes juveniles based in Kariong in this collection, however, this facility accounts for less than 0.5% of the New South Wales prisoner population.

11 Federal prisoners include those persons charged and sentenced under a Commonwealth statute, and those persons who are charged and sentenced under the laws of another country but transferred to an Australian prison to serve their sentence under the *International Transfer of Prisoners Act 1997* (Cwlth). To give practical effect to this legislation in Australia, the framework was introduced in January 2003. For the purposes of this publication, federal sentenced prisoners are those persons who are recognised by the Criminal Law Division of the Australian Government Attorney-General's Department as having been charged and sentenced under a Commonwealth statute, or transferred from another country to serve their sentence in Australia.

12 With the exception of Victoria and Tasmania, community-based corrections includes those persons with breached or suspended orders.

DATA SOURCE

13 Statistics in this publication are derived from information provided to the ABS from administrative records held by corrective services agencies within each state and territory. Statistics on federal prisoners are derived from records kept by the Criminal Law Division of the Australian Government Attorney-General's Department.

COUNTING RULES

14 Statistics for persons held in custody are presented by the state or territory in which they were held and therefore may not be the sentencing jurisdiction. The only exception to this are data for federal sentenced prisoners. These are presented by the state or territory in which they were sentenced, not where they were held in custody.

EXPLANATORY NOTES *continued*

COUNTING RULES *continued*

15 Sentenced prisoners who have other offences that are unsentenced are counted as sentenced. Prisoners may be unsentenced because they are awaiting the outcome of their trial, convicted but awaiting sentence, or awaiting deportation.

16 If an offender has two or more different types of community-based orders operating simultaneously, then each order will be counted. If two or more community-based orders are of the same type, these orders together will only be counted as one order.

RATES

17 Imprisonment and community-based corrections rates enable comparisons of prisoner numbers to be made across states and territories. Prisoner and community-based corrections rates are expressed per 100,000 adult population. Imprisonment rates are calculated based on two different counting concepts (average daily and first day of the month), as a result there may be variations in imprisonment rates presented in this publication.

18 In this publication the population figures used in the calculation of rates are for persons aged 18 years and over for all states and territories except Queensland where the population is persons aged 17 years and over (see paragraph 9).

19 Rates for the total adult prisoner population and persons in community-based corrections are calculated using the estimated resident population (ERP) for each of the states and territories. All estimates for the Australian Capital Territory exclude Jervis Bay Territory. All estimates for Australia exclude the external territories of Christmas Island and the Cocos (Keeling) Island. As the population changes over time the denominator used for the calculation of rates varies, depending on the reference period. The most current ERP data available at the time of publication are used to calculate rates as follows:

- for the March quarter, ERP is from the previous September quarter;
- for the June quarter, ERP is from the previous December quarter;
- for the September quarter, ERP is from the previous March quarter;
- for the December quarter, ERP is from the previous June quarter; and
- annual rates are an average of the rates of the contributing quarters.

20 The ERP series are revised every five years to incorporate additional information available from the latest Census of Population and Housing. The rates per 100,000 adult persons presented in this issue have been calculated using different ERP counts as follows:

- Rates from the June 2007 quarter (except for Indigenous rates) are calculated using rebased data from the recent intercensal period (2001-2006) sourced from the 2006 Census of Population and Housing;
- All other rates are calculated using ERP data based on the 2001 Census of Population and Housing.

21 For population estimates and information on the methodology used to produce the ERP, see *Australian Demographic Statistics* (cat.no.3101.0).

Indigenous imprisonment rates

22 Rates for the Indigenous adult population in this publication are based on the low series projections for 30 June of the relevant calendar year (refer to *Experimental Estimates and Projections, Aboriginal and Torres Strait Islander Australians, 30 June 1991 to 30 June 2009* (cat.no.3238.0)). These projections are based on the 2001 Census of Population and Housing. New series of Indigenous population projections are scheduled for release in 2009 and will be based on the 2006 Census of Population and Housing.

EXPLANATORY NOTES *continued*

Indigenous imprisonment rates continued

23 The low series is one of two series of projections that have been published for the years 2002 to 2009.

- The low series assumes no 'unexplained growth' – that is, the Indigenous population recorded in the 2001 Census of Population and Housing is projected to change only as a result of births and deaths (natural increase) and, for the states and territories, as a result of interstate migration.
- The high series assumes that there will be 'unexplained growth' in the Indigenous population – that is, the Indigenous population is projected to change as a result of an unexplained component in addition to the effects of natural increase and interstate migration. The size of the unexplained component is based on the 'unexplained growth' observed between the 1996 and 2001 Censuses.

24 The decision to use the low series as the denominator in the calculation of Indigenous imprisonment rates from 2002 followed consultation with the National Corrective Services Statistics Unit Advisory Group and other stakeholders.

INDIGENOUS IDENTIFICATION

25 The ABS conducts an ongoing programme of quality assurance to monitor and improve the quality of Indigenous Status data in Corrective Services agencies (both custodial and community-based corrections). Whilst the ABS has published Indigenous status data in Corrective Services collections for a number of years, quality assurance is required to better understand the level of accuracy over time

26 The quality of the Indigenous status information collected and recorded in Corrective Services agencies is assessed against the ABS Standard Indigenous Question (SIQ). The SIQ is based upon self-identification by the individual who comes into contact with Corrective Services agencies. The SIQ requires individuals to be asked "Are you of Aboriginal or Torres Strait Islander origin?" The answers to the SIQ can be 'No', 'Yes, Aboriginal', or 'Yes, Torres Strait Islander'. If the offender is of Aboriginal and Torres Strait Islander origin, both responses should be identified. If an offender does not supply an answer to this question, or is not asked, the Indigenous status field should be recorded as 'not stated'.

27 As a result, the minimum output categories required in systems are:

- Aboriginal, but not Torres Strait Islander origin
- Torres Strait, but not Aboriginal origin
- Both Aboriginal and Torres Strait Islander origin
- Neither Aboriginal nor Torres Strait Islander origin
- Not stated/inadequately described

28 For custodial corrections, initial indications are that corrective services agencies in all states and territories, with the exception of Western Australia, ask the SIQ as described above. South Australia asks a variation of the ABS' SIQ which generates the equivalent output categories for Indigenous Status.

29 Initial review suggests that corrective services agencies in all states and territories except Western Australia currently enter and store the ABS SIQ appropriately in recording systems for custodial data. For more information about Indigenous identification in community-based corrections refer to Appendix.

30 Some persons in custody are recorded with an unknown Indigenous status on the information systems of corrective agencies as their status has not been able to be obtained. Persons with Indigenous status unknown are excluded from tables 13 -16. Counts of persons with an unknown Indigenous status are included in all other tables. Unknowns account for just over 1% of all records.

EXPLANATORY NOTES *continued*

SIGNIFICANT EVENTS

New South Wales

31 In March 2008, the administrative classification of the Wellington Correctional Centre was altered. The classification was changed from 'open' to 'secure' for 75% of the facility to reflect the change in the profile of inmates held. As such, the proportion of persons in secure and open custody altered in the March quarter 2008 compared to previous quarters.

Victoria

32 The State government introduced an amnesty from February 2006 to May 2006 to encourage payment of unpaid fines. This resulted in a decrease in the number of persons serving a community-based reparation - fine option order, particularly for the September quarter 2006.

33 In March 2006, Victoria opened Marngoneet Correctional Centre, Lara. The focus of this facility is to provide intensive treatment and offender management programs for males who have a minimum of six months of their sentence left to serve when they arrive there. The new Metropolitan Remand Centre at Ravenhall was opened in April 2006. The facility provides increased capacity to hold prisoners awaiting trial or sentencing.

Queensland

34 Quality assurance conducted in Queensland during the June quarter 2009 has resulted in a revision of the number of offenders under community based corrections during January, February and March 2009.

35 Quality assurance work conducted in Queensland during the September quarter 2007 resulted in the identification and elimination of duplicate and other records for the month of July 2007. Caution should be exercised when comparing data prior to the September quarter 2007.

36 *The Corrective Services Act 2006* (Qld) commenced on 26 August 2006. One key provision in the new legislation relates to the management of offenders subject to Court-ordered Parole. This new order ensures that offenders serve 100% of their sentence under supervision, either in a correctional centre or under community supervision. This new order provides courts with the power to specify a parole release date for persons sentenced to a term of imprisonment of 3 years or less. Technical breaches of parole orders are no longer heard by a parole board and can often result in a person serving the remainder of their original sentence in custody. Court-ordered Parole is not available to sex offenders or serious violent offenders.

South Australia

37 Data on community-based correction orders extracted from the South Australian information system from the June quarter 2005 may be subject to data processing time lags.

Western Australia

38 Data for persons in secure and open custody is extracted on the basis of the prisoner's security rating, rather than the location of the prisoner as per the standard definition (see Glossary). As a result, prisoners with a minimum security rating and located in a medium or maximum security prison are counted in the open custody numbers. Data for persons in secure custody may be understated and data for persons in open custody may be overstated.

39 Data for community-based correction orders extracted from the Western Australian information system are subject to data processing time lags of 4-6 weeks. Fine option orders are most likely to be impacted by the lag, with approximately 10% of each month's data entry delayed.

40 Caution should be exercised when comparing community-based correction orders in Western Australia prior to the March quarter 2007 as data may have been slightly overstated.

EXPLANATORY NOTES *continued*

Tasmania

41 Tasmania was involved in a trial of new orders for bail, suspended sentences and drug treatment as part of the Court Mandated Diversion program (CMD) from 1 July 2007 to 30 June 2008. Counts for supervision (compliance) - bail orders during the September quarter 2008 represent the transitional period concluding this trial. These orders are now being handled by alternative service providers.

42 The new Risdon Prison Complex in Tasmania was opened on 28 August 2006. This complex includes the Mary Hutchison Women's Prison which was opened in May 2006. A new men's maximum/medium security facility was also built within the complex.

Australian Capital Territory

43 From the June quarter 2009 all sentenced prisoner receptions are detained within the Australian Capital Territory. For this same period nearly all ACT prisoners held in New South Wales prisons were transferred to a new custodial facility (Alexander Maconochie Centre) which commenced taking prisoners in March 2009. Between 2000 and March quarter 2009, persons sentenced to full-time custody by the Australian Capital Territory were usually held in New South Wales prisons as the Australian Capital Territory only had two remand centres for unsentenced prisoners and a periodic detention centre. Unsentenced Australian Capital Territory prisoners may have also been detained in New South Wales prisons. The exception was for persons sentenced for fine default; these prisoners were detained in Australian Capital Territory remand.

44 From the June quarter 2009, the new custodial facility, contains minimum, medium and maximum security prisoners; data for persons in secure and open custody are extracted on the basis of the prisoner's security rating, rather than the location of the prisoner as per the standard definition (see Glossary). As a result, prisoners with a minimum security rating are only recorded in open custody.

45 The decline in supervision bail compliance orders in December 2008 may have been partly influenced by data quality checks. Records with no completion or expiry date that should have been finalised on the system were marked as completed during this period.

46 To provide greater understanding of the number of prisoners attributed to the Australian Capital Territory, while presenting an accurate picture of the New South Wales prisoner population, statistics relating to Australian Capital Territory prisoners in New South Wales prisons are presented as a subset of the New South Wales figures.

47 Imprisonment rate data for the Australian Capital Territory are included in the publication and are calculated on the basis of the total number of Australian Capital Territory prisoners (i.e. Australian Capital Territory prisoners held in New South Wales prisons, and Australian Capital Territory prisoners held in the Australian Capital Territory) divided by the estimated resident Australian Capital Territory adult population and multiplied by 100,000. For New South Wales, the imprisonment rate is based on the count of New South Wales prisoners, excluding Australian Capital Territory prisoners held in New South Wales prisons, divided by the estimated resident New South Wales adult population and multiplied by 100,000. Time series data have also been derived on this basis.

RELATED PUBLICATIONS

ABS Publications

48 Other ABS publications that may be of interest include:

Australian Demographic Statistics (cat.no.3101.0) – issued quarterly

Australian Social Trends (cat.no.4102.0) – issued quarterly

Australian Standard Offence Classification (cat.no.1234.0) – released 1 August 2008

Crime and Safety, Australia (cat.no.4509.0) – released 26 April 2006

Criminal Courts, Australia (cat.no.4513.0) – issued annually

Experimental Estimates and Projections, Aboriginal and Torres Strait Islander Australians, 30 June 1991 to 30 June 2009 (cat. no. 3238.0)

EXPLANATORY NOTES *continued*

ABS Publications *continued*

General Social Survey: Summary Results, Australia (cat.no.4159.0) – irregular
Information Paper: Measuring Crime Victimisation, Australia: The Impact of Different Collection Methodologies (cat.no.4522.0.55.001) – single issue
Information Paper: National Criminal Justice Statistical Framework (cat.no. 4525.0) – single issue
Information Paper: National Information Development Plan for Crime and Justice Statistics 2005 (cat.no.4520.0) – single issue
Measures of Australia's Progress (cat.no.1370.0) – released 31 May 2006
Personal Fraud Survey (cat.no.4528.0) – released 27 June 2008
Personal Safety Survey (cat.no.4906.0) – released 21 August 2006
Prisoners in Australia (cat.no.4517.0) – issued annually
Recorded Crime – Victims, Australia (cat.no.4510.0) – issued annually
Recorded Crime – Offenders, Selected states and territories (cat.no.4519.0) – released 27 August 2009
Sexual Assault in Australia: A Statistical Overview (cat.no.4523.0) – single issue

49 Current publications and other products released by the ABS are available from the ABS website <<http://www.abs.gov.au>>. The ABS also issues a daily Release Advice on the website that details products to be released in the week ahead. The National Centre for Crime and Justice Statistics releases *Crime and Justice News* (cat. no. 4500.0), an annual newsletter that is published on the ABS website. The Centre can be contacted by email through <crime.justice@abs.gov.au>.

Non-ABS Publications

50 Non-ABS sources that may be of interest include:
Australian Institute of Criminology, *List of Publications* – irregular
<<http://www.aic.gov.au>>
Crime Research Centre, University of Western Australia, *Crime and Justice Statistics for Western Australia* – issued annually
<<http://www.crc.law.uwa.edu.au>>
Department of Corrective Services, New South Wales, *NSW Inmate Census* – irregular
<<http://www.dcs.nsw.gov.au>>
Department of Justice, Northern Territory, *Northern Territory Quarterly Crime and Justice Statistics* – issued quarterly
<<http://www.nt.gov.au/justice/>>
Department of Justice, Victoria, *Statistical Profile of the Victorian Prison System* – issued annually
<<http://www.justice.vic.gov.au>>
NSW Bureau of Crime Statistics and Research, *New South Wales Criminal Courts Statistics* – issued annually
<<http://www.lawlink.nsw.gov.au>>
Office of Crime Statistics and Research, *South Australia, Crime and Justice in South Australia* – issued annually
<<http://www.ocsar.sa.gov.au>>
Steering Committee for the Review of Commonwealth/State Service Provision, *Report on Government Services* – issued annually
<<http://www.pc.gov.au>>

INTRODUCTION

This appendix presents experimental data for Indigenous persons in community-based corrections. Data are presented as the number of Indigenous persons on community-based corrections orders on the first day of the month.

An initial evaluation of the quality of Indigenous identification by the ABS in community-based corrections has highlighted that currently most jurisdictions comply with the requirements of the ABS Standard Indigenous Question (SIQ - see Explanatory Notes, paragraph 26). As Indigenous Status data for persons under the supervision of Community-Based Corrections are still experimental, care should be taken when referring to this data. It should be noted that both Western Australia and the Northern Territory ask offenders variations of the SIQ which do not contain all the necessary elements of the ABS question and are unable to hold the SIQ appropriately in recording systems. The ABS will continue to work with states and territories to better understand and improve the quality of this data item.

APPENDIX EXPERIMENTAL COMMUNITY-BASED CORRECTIONS DATA

continued

A1 PERSONS IN COMMUNITY-BASED CORRECTIONS(a)(b), By Indigenous status

	NSW	Vic.	Qld	SA(c)	WA(d)(e)	Tas.	NT	ACT	Aust. (f)
INDIGENOUS (NUMBER ON FIRST DAY OF MONTH)									
2006	2 908	324	2 146	746	1 777	141	846	81	8 969
2007	3 198	341	2 267	816	1 643	137	880	100	9 380
2008	3 178	353	2 556	928	1 815	132	847	125	9 935
2008									
Jun Qtr	3 192	352	2 547	896	1 838	129	873	116	9 944
Sep Qtr	3 174	346	2 598	963	1 811	128	823	131	9 974
Dec Qtr	3 212	359	2 617	1 003	1 850	137	834	149	10 163
2009									
Mar Qtr	3 206	380	r2 714	1 011	1 928	153	863	150	r10 404
Jun Qtr	3 132	420	2 735	987	2 027	157	882	158	10 498
Apr	3 125	382	2 725	983	2 030	153	872	157	10 427
May	3 128	420	2 747	979	2 038	158	885	158	10 513
Jun	3 143	457	2 734	998	2 014	161	888	160	10 555
NON-INDIGENOUS (NUMBER ON FIRST DAY OF MONTH)									
2006	13 835	6 675	9 978	4 793	3 613	946	307	876	41 024
2007	13 843	6 707	10 317	4 809	3 580	970	291	959	41 476
2008	13 793	6 946	11 564	4 919	3 715	970	252	1 075	43 234
2008									
Jun Qtr	14 014	6 928	11 461	4 900	3 700	959	279	1 044	43 286
Sep Qtr	13 772	6 983	11 787	4 913	3 730	974	221	1 094	43 474
Dec Qtr	13 593	6 826	11 826	5 000	3 691	996	231	1 145	43 307
2009									
Mar Qtr	13 541	6 283	r11 697	5 026	3 668	1 004	234	1 170	r42 623
Jun Qtr	13 289	6 606	11 603	5 005	3 655	1 051	244	1 183	42 636
Apr	13 402	6 115	11 602	5 016	3 699	1 050	236	1 208	42 328
May	13 295	6 502	11 591	5 017	3 640	1 053	246	1 177	42 521
Jun	13 170	7 200	11 617	4 982	3 627	1 050	250	1 163	43 059
UNKNOWN (NUMBER ON FIRST DAY OF MONTH)									
2006	1 101	602	—	58	4	97	2	125	1 988
2007	962	662	—	46	6	52	2	79	1 809
2008	983	651	—	41	15	41	1	101	1 833
2008									
Jun Qtr	883	507	—	44	19	61	—	118	1 633
Sep Qtr	952	545	—	49	17	19	—	122	1 704
Dec Qtr	1 247	964	—	42	6	25	3	50	2 336
2009									
Mar Qtr	1 533	1 349	—	57	12	38	3	71	3 062
Jun Qtr	1 848	1 223	—	58	16	38	—	47	3 232
Apr	1 746	1 534	—	51	11	36	—	42	3 420
May	1 841	1 362	—	59	18	38	—	52	3 370
Jun	1 957	774	—	65	20	41	—	48	2 905

— nil or rounded to zero (including null cells)

r revised

(a) Figures include persons with breached or suspended orders, with the exception of Vic. and Tas.

(b) Figures for the quarter and year for first day of the month counts are calculated as a simple average – see Explanatory Notes, paragraph 5.

(c) Data movements may be influenced by data entry delays – see Explanatory Notes, paragraph 37.

(d) Data prior to the March quarter 2007 may be slightly overstated – see Explanatory Notes, paragraph 40.

(e) Data is subject to processing delays of 4 to 6 weeks - see Explanatory Notes, paragraph 39.

(f) See footnotes c-e.

APPENDIX EXPERIMENTAL COMMUNITY-BASED CORRECTIONS DATA

continued

A1 PERSONS IN COMMUNITY-BASED CORRECTIONS(a)(b), By Indigenous status *continued*

	NSW	Vic.	Qld	SA(c)	WA(d)(e)	Tas.	NT	ACT	Aust. (f)
PERSONS (NUMBER ON FIRST DAY OF MONTH)									
2006	17 843	7 601	12 124	5 597	5 395	1 184	1 155	1 082	51 981
2007	18 002	7 710	12 584	5 671	5 229	1 159	1 173	1 138	52 665
2008	17 954	7 950	14 120	5 888	5 545	1 143	1 100	1 301	55 001
2008									
Jun Qtr	18 089	7 787	14 009	5 840	5 558	1 150	1 152	1 277	54 862
Sep Qtr	17 898	7 874	14 385	5 926	5 557	1 121	1 044	1 347	55 152
Dec Qtr	18 052	8 150	14 443	6 045	5 547	1 158	1 068	1 344	55 806
2009									
Mar Qtr	18 280	8 012	14 411	6 093	5 608	1 195	1 100	1 390	56 089
Jun Qtr	18 269	8 249	14 339	6 050	5 699	1 247	1 126	1 388	56 366
Apr	18 273	8 031	14 327	6 050	5 740	1 239	1 108	1 407	56 175
May	18 264	8 284	14 338	6 055	5 696	1 249	1 131	1 387	56 404
Jun	18 270	8 431	14 351	6 045	5 661	1 252	1 138	1 371	56 519

r revised

- (a) Figures include persons with breached or suspended orders, with the exception of Vic. and Tas.
- (b) Figures for the quarter and year for first day of the month counts are calculated as a simple average – see Explanatory Notes, paragraph 5.

(c) Data movements may be influenced by data entry delays – see

Explanatory Notes, paragraph 37.

(d) Data prior to the March quarter 2007 may be slightly overstated – see Explanatory Notes, paragraph 40.

(e) Data is subject to processing delays of 4 to 6 weeks - see Explanatory Notes, paragraph 39.

(f) See footnotes c-e.

APPENDIX EXPERIMENTAL COMMUNITY-BASED CORRECTIONS DATA

continued

A2 PROPORTION OF PERSONS IN COMMUNITY-BASED CORRECTIONS(a)(b), By Indigenous status

	NSW	Vic.	Qld	SA(c)	WA(d)(e)	Tas.	NT	ACT	Aust. (f)
INDIGENOUS (%)									
2006	16.3	4.3	17.7	13.3	32.9	11.9	73.3	7.4	17.3
2007	17.8	4.4	18.0	14.4	31.4	11.8	75.0	8.8	17.8
2008	17.7	4.4	18.1	15.8	32.7	11.5	77.0	9.6	18.1
2008									
Jun Qtr	17.6	4.5	18.2	15.3	33.1	11.2	75.8	9.1	18.1
Sep Qtr	17.7	4.4	18.1	16.3	32.6	11.5	78.8	9.7	18.1
Dec Qtr	17.8	4.4	18.1	16.6	33.3	11.9	78.1	11.1	18.2
2009									
Mar Qtr	17.5	4.7	r18.8	16.6	34.4	12.8	78.4	10.8	r18.5
Jun Qtr	17.1	5.1	19.1	16.3	35.6	12.6	78.3	11.4	18.6
Apr	17.1	4.8	19.0	16.2	35.4	12.3	78.7	11.2	18.6
May	17.1	5.1	19.2	16.2	35.8	12.7	78.2	11.4	18.6
Jun	17.2	5.4	19.1	16.5	35.6	12.9	78.0	11.7	18.7
NON-INDIGENOUS (%)									
2006	77.5	87.8	82.3	85.6	67.0	79.9	26.6	81.0	78.9
2007	76.9	87.0	82.0	84.8	68.5	83.7	24.8	84.3	78.8
2008	76.8	87.4	81.9	83.5	67.0	84.9	22.9	82.6	78.6
2008									
Jun Qtr	77.5	89.0	81.8	83.9	66.6	83.4	24.2	81.7	78.9
Sep Qtr	76.9	88.7	81.9	82.9	67.1	86.9	21.2	81.2	78.8
Dec Qtr	75.3	83.8	81.9	82.7	66.5	86.0	21.7	85.2	77.6
2009									
Mar Qtr	74.1	78.4	r81.2	82.5	65.4	84.1	21.3	84.1	r76.0
Jun Qtr	72.7	80.1	80.9	82.7	64.1	84.3	21.7	85.2	75.6
Apr	73.3	76.1	81.0	82.9	64.4	84.7	21.3	85.9	75.4
May	72.8	78.5	80.8	82.9	63.9	84.3	21.8	84.9	75.4
Jun	72.1	85.4	80.9	82.4	64.1	83.9	22.0	84.8	76.2
UNKNOWN (%)									
2006	6.2	7.9	—	1.0	0.1	8.2	0.2	11.6	3.8
2007	5.3	8.6	—	0.8	0.1	4.5	0.1	6.9	3.4
2008	5.5	8.2	—	0.7	0.3	3.6	0.1	7.7	3.3
2008									
Jun Qtr	4.9	6.5	—	0.8	0.3	5.3	—	9.2	3.0
Sep Qtr	5.3	6.9	—	0.8	0.3	1.7	—	9.1	3.1
Dec Qtr	6.9	11.8	—	0.7	0.1	2.1	0.2	3.7	4.2
2009									
Mar Qtr	8.4	16.8	—	0.9	0.2	3.2	0.3	5.1	5.5
Jun Qtr	10.1	14.8	—	1.0	0.3	3.1	—	3.4	5.7
Apr	9.6	19.1	—	0.8	0.2	2.9	—	3.0	6.1
May	10.1	16.4	—	1.0	0.3	3.0	—	3.7	6.0
Jun	10.7	9.2	—	1.1	0.4	3.3	—	3.5	5.1

— nil or rounded to zero (including null cells)

r revised

(a) Figures include persons with breached or suspended orders, with the exception of Vic. and Tas.

(b) Figures for the quarter and year for first day of the month counts are calculated as a simple average – see Explanatory Notes, paragraph 5.

(c) Data movements may be influenced by data entry delays – see Explanatory Notes, paragraph 37.

(d) Data prior to the March quarter 2007 may be slightly overstated – see Explanatory Notes, paragraph 40.

(e) Data is subject to processing delays of 4 to 6 weeks - see Explanatory Notes, paragraph 39.

(f) See footnotes c-e.

GLOSSARY

Bail	This is generally a pre-sentence option where a person is released into the community for a period before they appear in court for trial or final sentencing. Bail orders can require a financial surety to be lodged with the court, and a number of conditions including supervision and residential requirements designed to ensure the re-appearance of the person at court. Bail counts are available only in states and territories where bail orders are supervised by corrective services. Bail is a sub-category of Supervision where the person is under the supervision of corrective services (<i>see</i> Supervision).
Community-based corrections	This refers to the community-based management of court-ordered sanctions, post-prison administrative arrangements and fine conversions, which principally involve the provision of one or more of the following activities: supervision, programs or community work.
Community service	This category of community-based corrections orders includes sentencing options requiring offenders to undertake a specified number of hours of unpaid, supervised work to benefit the community on an approved project. Community service is a sub-category of Reparation (<i>see</i> Reparation).
Corrective services custody	Confinement in a place intended primarily for the purpose of confining prisoners, such as a prison, prison farm, Periodic Detention Centre or Community Custody Centre.
Federal sentenced prisoner	Persons charged and sentenced under a Commonwealth statute or transferred from another country to serve their sentence in Australia.
Fine option	A community-based sentence type where the offender is serving a sentence for default of a fine. In most jurisdictions this order type requires an offender to complete community service as a reparatory act. Fine option is a sub-category of Reparation (<i>see</i> Reparation).
Full-time prison custody	A type of custody where a prisoner is required to be held in custody on a full-time basis. This includes prisons, Queensland Community Custody Centres and work outreach camps. Full-time prison custody excludes periodic detention (<i>see</i> Periodic detention).
Home detention	(<i>see</i> Restricted movement)
Indigenous prisoner	A prisoner who identifies as being of Aboriginal or Torres Strait Islander origin, or both.
Legal status	A person may be either sentenced or unsentenced depending on the warrant(s) or court order(s) that provide the legal basis for the administration of the person through the criminal justice system.
Open custody	Refers to prisoners housed in minimum security custodial facilities that do not require them to be confined by a secure perimeter physical barrier, irrespective of whether a physical barrier exists.
Parole	A parole order is made following a period of imprisonment and requires an offender to be subject to supervision in the community. Additional conditions may also be applied such as programs, counselling or drug testing. Parole is a sub-category of Supervision (<i>see</i> Supervision).
Periodic detention	A type of custody or order where a sentenced prisoner is required to be held in custody on a part-time basis. Currently this consists of two consecutive days in a one-week period, while remaining at liberty during the rest of the week.
Prisoner	A person held in custody. For the purposes of this collection, prisoners are those whose confinement is the responsibility of a corrective services agency.
Remand	(<i>see</i> Unsentenced)
Reparation	Reparation refers to all offenders with an order that requires them to undertake unpaid, justice agency-approved community service work.

GLOSSARY *continued*

Restricted movement	This refers to persons who are subject to a system of restricted movement, including supervision and/or electronic monitoring. This category includes home detention that may restrict residence to a nominated place. Restricted movement can be either a pre-sentence or post-sentence order.
Secure custody	Refers to prisoners housed in medium or maximum security custodial facilities requiring them to be confined by a secure physical barrier.
Sentenced	A legal status indicating that a person has received a custodial or community-based order from a court in response to a conviction for an offence.
Sentenced prisoner reception	Refers to entry into corrective services custody from the community, having received a sentence of imprisonment as an outcome of a court proceeding; or persons who are sentenced to custody while in custody on remand (i.e. changed status from a remand to a sentenced prisoner); or persons entering custody as a result of defaulting on the payment of a fine. Sentenced prisoners in custody who receive a further sentence of imprisonment are not counted as sentenced receptions.
Sentenced probation	A supervision order made following an original sentence handed down in court following conviction. A probation order generally requires 'good behaviour' and compliance with the directions of supervisors. The order may also require compliance with conditions such as program attendance and residential requirements.
Supervision (compliance)	This includes community-based orders other than those categorised as restricted movement or reparation (e.g. parole, bail and sentenced probation).
Unsentenced	A legal status indicating that a person is confined to custody or supervision while awaiting the outcome of their trial.

FOR MORE INFORMATION . . .

INTERNET

www.abs.gov.au the ABS website is the best place for data from our publications and information about the ABS.

INFORMATION AND REFERRAL SERVICE

Our consultants can help you access the full range of information published by the ABS that is available free of charge from our website. Information tailored to your needs can also be requested as a 'user pays' service. Specialists are on hand to help you with analytical or methodological advice.

PHONE

1300 135 070

EMAIL

client.services@abs.gov.au

FAX

1300 135 211

POST

Client Services, ABS, GPO Box 796, Sydney NSW 2001

FREE ACCESS TO STATISTICS

All statistics on the ABS website can be downloaded free of charge.

WEB ADDRESS

www.abs.gov.au